

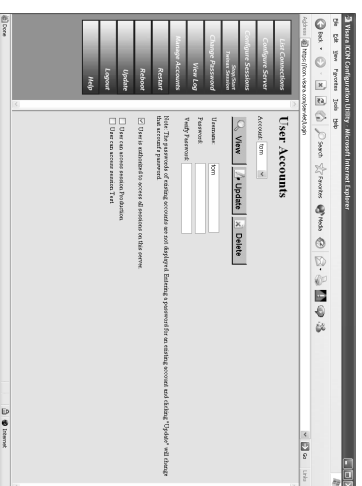
5. **Require User Authorization** - Requires userid and password to log in to an emulation session.

6. **Arbitration timeout in seconds** - The time, in seconds, that may lapse between the last keystroke of one user and the time that the other user may have keyboard control.

Click **Submit** to accept the changes, or **Cancel** to discard the changes.

Manage Accounts:

Click **Manage Accounts** from the ICON-1T Configuration Utility menu.

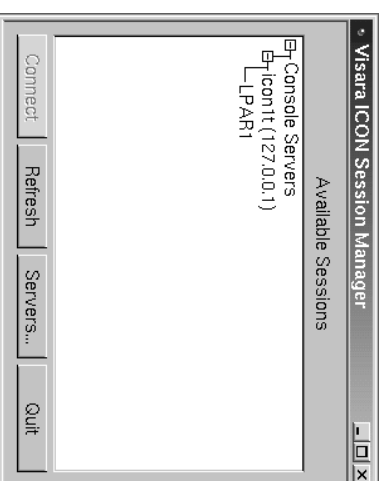


Set up a new user account:

1. Enter a **Username** and **Password**. Verify the password by entering it again.
2. Select the access authorization of the user. Authorization may be given individually for particular sessions, or for all sessions on the server.
3. Click **Update**.

Click **Logout** to exit the ICON-1T Configuration Utility.

ICON Session Manager

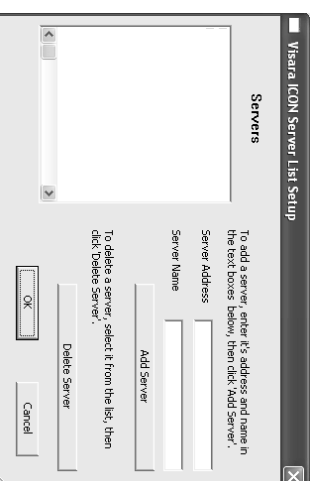


When the Session Manager window opens, a message will appear that the Session Manager is “Searching for Servers”. Any available servers and sessions will appear in the “Available Sessions” window.

Adding a server:

To add a server to the list:

1. Click the **Server** button at the bottom of the Session Manager window. The Visara ICON-1T Server List Setup window will open.



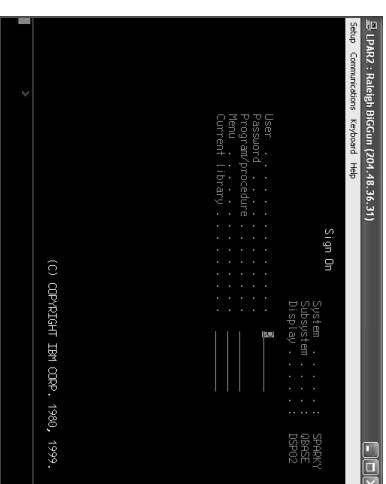
2. Enter the **Server Address** and **Server Name**. Click **Add Server**. The new server name will appear in the Servers window.
3. Click **OK**. You will be returned to the Session Manager screen. Click the **Refresh** button if the new server name does not appear.

Note: The Server Address or Server Name may not be edited once added, only deleted. If a correction is needed, simply delete the server and add again.

Connecting to a server:

If a server has been successfully added, the server name and any available sessions will appear in the “Available Sessions” window.

To connect to an available server, highlight the server name and click **Connect**. The Session Screen will appear, or an authorization window if user authorization is required.



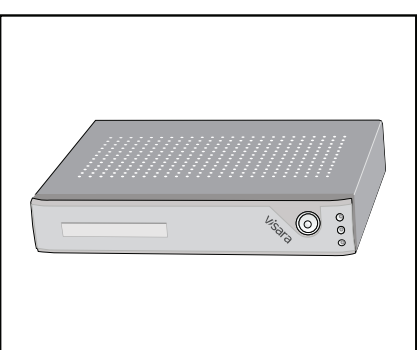
The *ICON-1T Single Station Console Terminal User's Manual* is available for download at <http://www.visara.com>.

ATTENTION
If you encounter problems on Start-Up, please contact VISARA Intellicenter Help Desk, Tel: 888.542.7282.

Quick Start

Visara ICON-1T

Installation



Setup

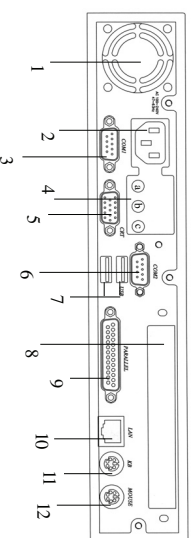
Initial Setup:

1. Place the display unit beside the logic unit. Make sure that the power is off, on both the logic unit and the display unit.
2. Place the keyboard in front of the logic unit.

Refer to the diagram of the rear of the unit to make the following connections:

1. Connect the display unit to the video connector.
 2. Connect the keyboard to the keyboard connector.
 3. Connect the mouse to the mouse connector.
 4. Connect the Ethernet network cable to the RJ45 network connector.
 5. Connect the Twinax connector to the T-cable attached to the rear of the unit.
- Power Up the Terminal:**
1. First power the monitor ON.
 2. Press the power switch on the front of the terminal to power it on.

ICON-1T Rear View



Term	Definition
1. Air Galle	1. System cooling vent
2. AC Input	2. Connect to power cord
3. COM 1	3. 16550UART connect to one serial device
4. Sound Jack	4. Connect to sound port
a: Line Out	a. Connect to speaker or audio signal input of other devices
b: Line In	b. Connect to audio signal output of other devices
c: MIC	c. Connect to microphone
5. CRT Connector	5. Connect CRT monitor
6. COM 2	6. 16550UART connected to one serial device
7. USB (2 ports)	7. Connect to USB devices
8. Expansion Card Area	8. Installation slot for Twinax card
9. Parallel Port	9. Connect to devices with EPP/ECP port
10. RJ 45 Connector	10. Connect to 10/100 base-T Ethernet cable
11. PS/2 Keyboard	11. Connect PS/2 type keyboard
12. PS/2 Mouse	12. Connect PS/2 type mouse

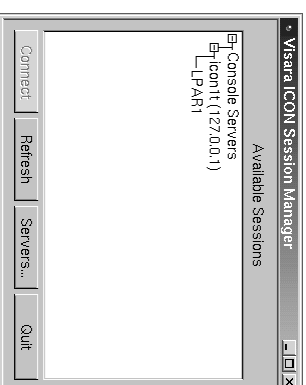
The configuration instructions that follow are for an initial quick setup only. The *ICON-1T Single Station Console Terminal User's Manual* should be consulted for further configuration instructions. This manual is available by clicking Help from the ICON-1T Start menu.

For the most current version of the User's Manual, visit the Support center at <http://www.visara.com>.

After powering on the ICON-1T, a Message window will appear indicating that the ICON Server is starting. Click **OK**.



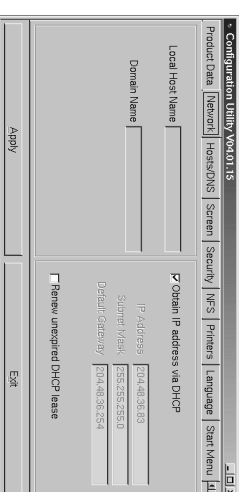
The Visara ICON Session Manager window will open.



If you are powering on your terminal for the first time, you will need to configure the ICON-1T with network, server, and user information before connecting to a server session.

Network Configuration

The ICON-1T configuration program can be started by choosing **Settings** and then **General** from the Start Menu.

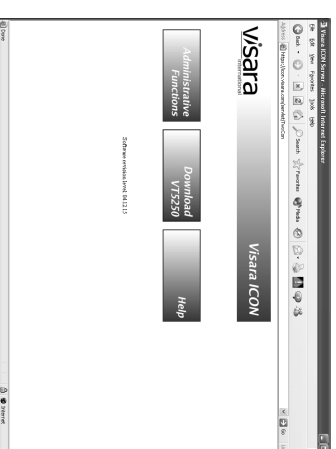


On the Network panel, enter **Local Host Name** and **Domain Name** for Ethernet. The IP Address, Subnet Mask and Default Gateway must be entered unless provided by DHCP. Select **Renew unexpired DHCP lease** to allow an IP address to be renewed if the DHCP lease has not expired.

Click **Apply** to accept the settings, or **Exit** to ignore the changes and exit the configuration program. The ICON-1T must be shut down and restarted for the IP address to become effective.

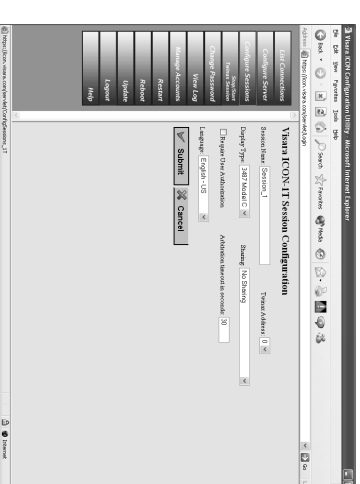
Server Configuration

Use the Netscape web browser to complete the ICON-1T server configuration. Log in to the server configuration utility by selecting **Programs** and then **Netscape** from the Start Menu. The browser has been pre-configured with the address required to open the main page of the ICON-1T Configuration Utility (<http://127.0.0.1>).



Click **Administrative Functions**. You will be prompted for the administrator password. (Certificate related windows may be displayed before you are asked for a password.) The default password is **admin**, and is case sensitive. Enter password and click **Submit**.

Configure Sessions:
Click **Configure Sessions** on the ICON-1T Configuration Utility menu.



- 1. Session Name** - Enter a unique name for the new session.
- 2. Twinax Address** - Select the twinax address to use for this session, 0 - 6. This address must not be used for more than one session on the same twinax connection.
- 3. Display Type** - Select the display you wish to emulate.
- 4. Sharing** - Select from the following:
 - **No Sharing:** Once the session is active, it may not be accessed by another user.
 - **Sharing, no arbitration:** The session may be shared by multiple users. With *no arbitration* more than one user may use the keyboard at the same time.
 - **Sharing, with arbitration:** The session may be shared by multiple users. With *arbitration* only one user has control of the keyboard. The arbitration timeout determines how many seconds will lapse between the last keystroke of one user and the time that control of the keyboard is released to others.
 - **Sharing, with arbitration and override:** In addition to the above, *Sharing with arbitration*, one user is able to take control of the keyboard by selecting **Override Lockout** from the **Keyboard** menu on the emulation screen.