

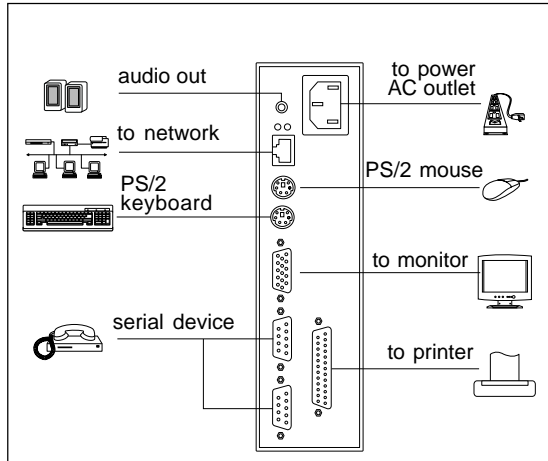
MTX *e*Term 350



Windows-based Terminal

For quick setup of this device follow the instructions below.

Installation



Power Connection:

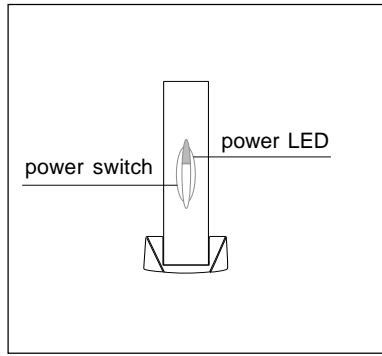
Connect the power cord to the power socket on the back of the unit. Connect the other end to a live wall outlet.

Terminal Connection:

1. Connect the monitor to the video connector.
2. Connect the keyboard to the keyboard connector.
3. Connect the mouse to the mouse connector.
4. Connect the 10/100-TX network cable to the RJ-45 network connector.

* Connect other peripheral equipment as required. Refer to the figure shown above.

Power Up



1. To power up this terminal, first turn the monitor ON.
2. Second, press the power switch on the front of the terminal to turn it ON. You will see a green LED.

Setup Wizard

If you are powering on your terminal for the first time, the Setup Wizard will lead you through the configuration process.

Setup Wizard Instructions:

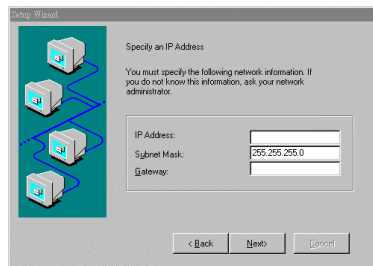
1. When the Welcome screen appears, click **Next**.
2. The End User License Agreement specifies the legal terms governing your use of this product. To proceed, click **Accept**.

3. Enable or disable the assignment of an IP address.

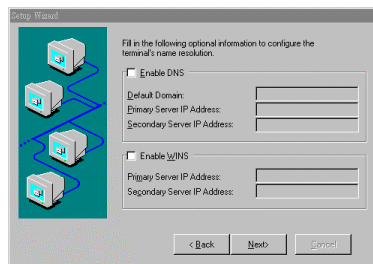
a. If your network provides DHCP service and you want it to provide the terminal IP information, leave the first option selected. Click **Next**.



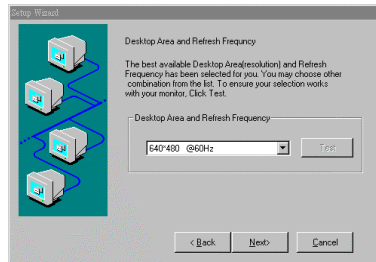
b. If you need to specify a static IP address for the terminal, select the second option and click **Next**.



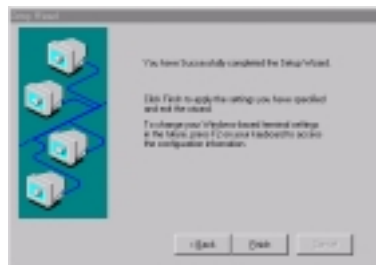
c. Supply the network information requested for the Static IP Addressing method. It allows the terminal to use one or both of the DNS/WINS name resolution services. Enter the information as appropriate for each and click **Next**.



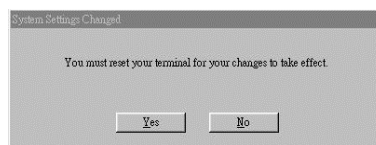
4. Select the display resolution and refresh frequency. Click **Next**.



5. Complete the Setup Wizard. To review or change settings made on previous pages, click **Back**; to apply the settings, click **Finish**.

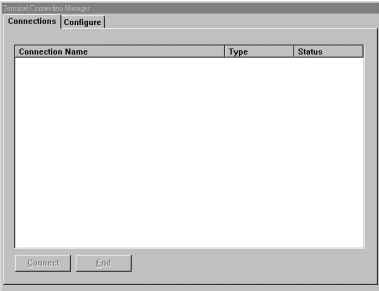


6. You now need to restart your system so that the changes made will take effect. Click **Yes**.



Terminal Connection Manager

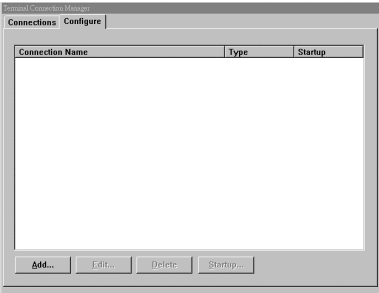
The Terminal Connection Manager is used to manage your terminal network connection. It will appear on the screen each time the terminal is powered on.



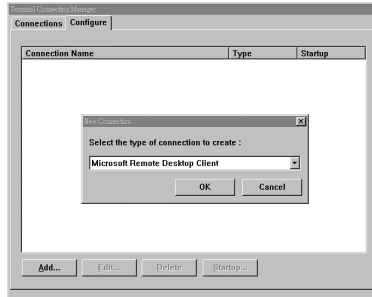
Creating Connections:

For each client available on a terminal unit, you may define any number of host connections.

1. Select the Configure tab; click **Add** to create a new connection.

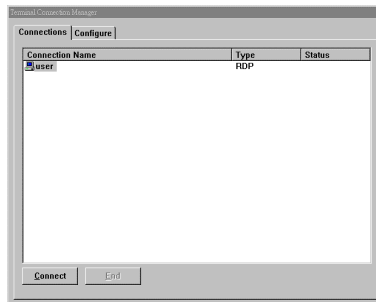


2. Select the desired protocol and click **OK** to continue.



After protocol selection, the WTS Connection Wizard appears. Your system administrator can supply the information required to complete the client configuration.

3. Once you have finished either the Microsoft RDP or Citrix ICA connection, a newly created connection appears in the connection manager.



4. Highlight a connection from this dialog box and press **Connect** to establish the server connection.

Start!

You are now connected to the Windows server, allowing you to run Windows applications on the server.

Quick Reference

Configure Properties Sheet

- Add: Create a new connection.
- Edit: Edit or modify the properties of an existing connection.
- Delete: Delete a connection from the Terminal Connection box.
- Startup: Choose a connection you want to startup when the terminal is powered on.

Terminal Properties

Press the **[F2]** key to reset the terminal properties at any time. This terminal provides seven properties sheets that can be modified - General, Input, Display, Network, Audio, Upgrade, and WBT Info.

Note: Consult your system administrator before making modifications to the terminal properties.

Hbt-keys Functions:

- Ctrl + Alt + Up/Down Arrow:
Switch between Active Connections.
- Ctrl + Alt + Home:
Go back to the Default Connection
- Ctrl + Alt + End:
Go back to the Terminal Connection Manager screen.

Note: For more detailed information, refer to the user manual found online at www.mtx.com.

MTX, Inc.
2917 Highwoods Blvd.
Suite 100
Raleigh, NC 27604
1-888-334-4380

MTX, Inc.
Website: www.mtx.com