

***e*Term 300/360/760 Windows-based Terminals**

User's Manual

P/N 707064-001

ISSUE/REVISION SCHEDULE		
Comments	Rev. No.	Date
Initial Release	707064-001	8/15/2003

The information contained in this document is subject to change without notice. **Visara International makes no warranty of any kind with regard to this material including, but not limited to, the implied warranties of merchantability and fitness for a particular purpose.** Visara International shall not be liable for errors contained herein or for incidental or consequential damages in connection with the furnishing, performance, or use of this material.

Safety and Regulatory Information

Safety

- * UL1950, CSA950
- * CE Mark, IEC950, EN60950, EU Low Voltage Directive

Electro-Magnetic Interference

- * This equipment has been tested and found to comply with the limits for FCC part 15 Class B environment. This equipment generates, uses, and can radiate radio frequency energy and, if not installed and used in accordance with the instructions, may cause interference to radio communications. Operation is subject to the following two conditions:
 (1) This device may not cause harmful interference, and
 (2) This device must accept any interference received, including interference that may cause undesired operation.
- * This apparatus complies with the CDoC CLASS "B" limits for radio interference as specified in the Canadian Department of Communications Radio Interference Regulations. Operation in a residential area may cause unacceptable interference to radio and TV reception requiring the owner or operator to take whatever steps are necessary to correct the interference.
- * Cet appareil est conforme aux normes CDoC CLASS "B: D'Interférence radio tel que spécifier par le Ministère Canadien des communications dans les règlements D' Interference Radio. Cet équipement ne dépasse pas les limites de Classe B d'émission de bruits radioélectriques pour les appareils numériques, telles que prescrites par le Règlement sur le brouillage radioélectrique établi par le Ministère des Communications du Canada. L'exploitation faite en milieu résidentiel peut entraîner le brouillage des réceptions radio et télé, ce qui obligerait le propriétaire ou l'opérateur à prendre les dispositions nécessaires pour en éliminer les causes.
- * CE mark, EN50022 Class B, EN50082-1, EU EMC Directive
- * UCCI-B

Software License Agreement

You should carefully read the following terms and conditions before operating the *eTerm 300/360/760*. It contains software, the use of which is licensed by Visara International (“Visara”) to you for your use only as set forth below. Installation of the *eTerm 300/360/760* indicates your acceptance of these terms and conditions. If you do not agree with them, you should promptly return the complete system, including documentation, and your money will be refunded.

P/N 707064-001

1 LICENSE. In consideration of your payment of the license fee, Visara grants to you a nontransferable and nonexclusive license to use the enclosed proprietary software program and any documentation relating thereto (collectively referred to as the “Program”) on a single computer at a single location, or in the case of multiprocessor versions of the Program, on one node of a network. You assume all responsibility for the selection of the Program to achieve your intended results and for the installation, use, and results obtained from the Program.

2 PROGRAM OWNERSHIP. You own the physical media on which the Program is originally or subsequently recorded or fixed. This Agreement does not transfer title and ownership of the Program or any underlying rights, patents, copyrights, trademarks, and trade secrets.

3 RESTRICTIONS. The Program, including the accompanying documentation, is copyrighted. Unauthorized copying of the Program, including a Program that has been modified, merged, or included with other software program(s) is expressly forbidden. You may not copy the documentation accompanying the Program. You may make one copy of the Program (excluding accompanying documentation) into any machine readable or printed form solely for backup purposes in support of your use of the Program on a single computer (certain Programs, however, may include mechanisms to limit or inhibit copying). You must reproduce and include the Proprietary Notices (as defined below) on the backup copy. You must maintain an accurate record of the location of the backup copy at all times. You may not electronically transfer the Program from one computer to another over a network. You may not distribute copies of the Program to others. You may modify the Program and/or merge it into another program for your use on the single computer. Any portion of this Program merged into another program will continue to be subject to the terms and conditions of this Agreement. You may not modify, adapt, translate, reverse engineer, decompile, or disassemble, or in any manner decode the Program in order to derive source code. You agree to never remove any patent, copyright, trademark, or other proprietary notices (collectively referred to as the “Proprietary Notices”) or product identification affixed to the Program.

Any attempted sublicense, assignment, rental, sale, or other transfer of the Program or any right thereto shall be null and void. You may not use, copy, or modify the Program, or any copy, modification, or merged portion, in whole or in part, except as expressly provided for in this Agreement.

4 TERM. The license granted under this Agreement is effective until terminated. You may terminate it at any other time by destroying the Program together with all copies, modifications, and merged portions in any form. It will also terminate if you fail to comply with any term or condition of this Agreement. You agree upon such termination to destroy the Program together with all copies, modifications, and merged portions in any form, and to certify to Visara that they have been destroyed. Upon termination there will be no refund of any monies or other consideration paid by you.

5 LIMITED WARRANTY. The Program is Provided “as is” without warranty of any kind, either expressed or implied, including, but not limited to, the implied warranties of merchantability and fitness for a particular purpose. The entire risk as to the quality and performance of the Program is with you. Should the Program prove defective, you (and not Visara or its licensors, affiliates, contractors, suppliers, or agents) assume the entire cost of all necessary servicing, repair, or correction.

Visara and/or its licensors do not warrant that the functions contained in the Program will meet your requirements or that the operation of the Program will be uninterrupted or error free. However, Visara and/or its licensors warrant the media on which the Program is furnished to be free from defects in materials and workmanship under normal use for a period of ninety (90) days from the date of delivery.

6 LIMITATIONS OF REMEDIES. Visara’s and/or its Licensors’ entire liability and your exclusive remedy shall be: (1) the replacement of any media not meeting the “Limited Warranty” which is returned postage prepaid to Visara or an authorized representative with proof of payment; or (2) if Visara and/or its licensors are unable to deliver replacement media which is free from defects in materials or workmanship, you may terminate this Agreement by returning the Program and your money will be refunded.

In no event will Visara, its licensors, affiliates, contractors, suppliers, and agents be liable to you for any damages, including any lost profits, lost savings, or other incidental or consequential damages arising out of the use or inability to use such Program (whether based on an action or claim in contract, tort, or otherwise) even if Visara, its licensors, affiliates, contractors, suppliers, and agents have been advised of the possibility of such damages or for any claim by any other party.

This Agreement will be governed by the laws of the State of North Carolina. Should you have any questions concerning this Agreement, please contact your Visara Sales Representative or Visara International, 6833 Mt. Herman Rd., Morrisville, North Carolina 27560.

You acknowledge that you have read this Agreement, understand it, and agree to be bound by its terms and conditions. You further agree that it is the complete and exclusive statement of the Agreement between us which supersedes any proposal or prior Agreement, oral or written, and any other communications between us relating to the subject matter of this Agreement.


Table of Contents


	<u>Page</u>
Chapter 1. eTerm Installation	1-1
Usage Notice	1-1
Precautions	1-1
About the Product	1-2
Package Overview	1-2
eTerm 300	1-2
eTerm 360	1-3
eTerm 760	1-3
Product Overview	1-4
eTerm 300	1-4
eTerm 360	1-4
eTerm 760	1-4
Connector Introduction	1-5
Installation	1-5
Connecting the Terminal	1-5
Powering On the Terminal	1-5
Appendices	1-6
Troubleshooting	1-6
Specifications - eTerm 300	1-6
Specifications - eTerm 360	1-7
Specifications - eTerm 760	1-8
Chapter 2. eTerm Setup Wizard	2-1
Configuring the Unit	2-1
Welcome Screen	2-1
License Agreement Screen	2-1
Enable/Disable Dynamic Assignment of IP Address	2-2
Specify a Static IP Address	2-3
Enable/Disable Name Resolution Services	2-4
Choose Display Resolution	2-5
Configure Web Access	2-6
Local Printer Setup	2-7
Printer Port Setup	2-7
Printer Model Setup	2-8
Printer Name	2-8
Printer Default	2-9
Additional Printer Setup	2-9
Finishing the Setup Wizard	2-10
Restarting after Setup Wizard	2-10

	<u>Page</u>
Chapter 3. eTerm Terminal Connection	3-1
Creating Connections to Terminal Server Host	3-1
Configuring Connection Manager	3-1
Microsoft Remote Desktop Client Connection	3-2
Deleting a Connection	3-5
Modifying a Connection	3-5
Citrix ICA Client Connection	3-6
Creating a Network Connection	3-6
Deleting a Connection	3-10
Modifying a Connection	3-10
Creating a Dial-In Connection	3-10
Deleting a Connection	3-13
Modifying a Connection	3-14
Visara HostConnect Client Connection	3-14
Configuring Host Connections	3-15
New Connection	3-15
Connection Name	3-15
Connection Type	3-15
Host Name / Address	3-15
Terminal Type	3-16
Timeout	3-17
Additional Connection Capabilities	3-17
Display Parameters, TN5250E	3-17
Printer Parameters, TN5250E	3-18
Display Parameters, TN3270	3-19
Display Parameters, TN3270E	3-19
Printer Parameters, TN3270E	3-20
Chapter 4. eTerm Terminal Properties	4-1
Configuring the Unit via Control Panel	4-1
Accessing the Control Panel	4-1
Display	4-2
FTPUpdate	4-2
ICA Setting	4-3
Input & Volume	4-6
Internet Options	4-7
LPD	4-9
Network	4-9
Printers	4-10
RDP Settings	4-14
Security	4-15
SNMP	4-15
System	4-16
ThinPrint	4-16
Date/Time	4-18
SNTP	4-18
Index	Index-1

Chapter 1. *e*Term Installation

Usage Notice

 **Warning-** To reduce the risk of fire or electric shock, do not expose this product to rain or moisture.

 **Warning-** Please do not open or disassemble the product as this may cause electric shock.

Precautions

Follow all warnings and precautions as recommended in this user's manual to maximize the life of your unit.

Do:

- Turn off the product before cleaning.
- Use a soft cloth moistened with mild detergent to clean the terminal housing.

Don't:

- Block the slots and openings on the unit provided for ventilation.
- Use abrasive cleaners, waxes or solvents for your cleaning.
- Put heavy devices upon the terminal.
- Use under extremely hot, cold or humid conditions.

eTerm 300/360/760 Windows-based Terminals

About the Product

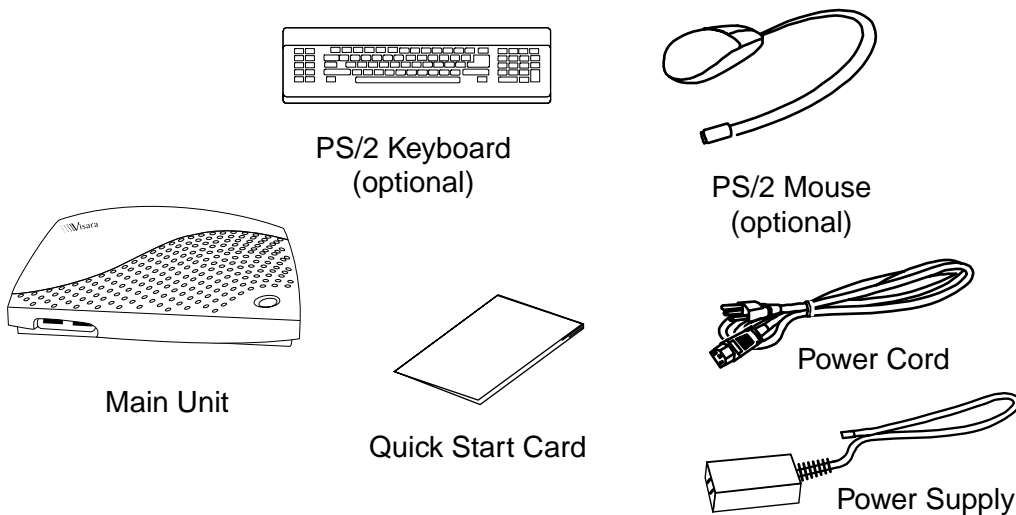
This Windows-based Terminal is a simple device that allows you to use Microsoft Windows applications running on a Windows NT server, supporting concurrent text and graphics sessions. Through network communications you can share resources such as a printer, exchange information from device to device, and run common software programs. The outstanding features of the unit are listed as follows:

- Windows CE with RDP & ICA
- Up to 1280 x 1024 display resolution
- Terminal emulator support
- Remote software upgrade capability
- 16-bit stereo audio output
- Modular design (mini tower) connects to any VESA standard monitor
- Display Windows NT/ 95/ 98/ 3.1, DOS (text) applications via multiuser Windows NT and 2000 servers

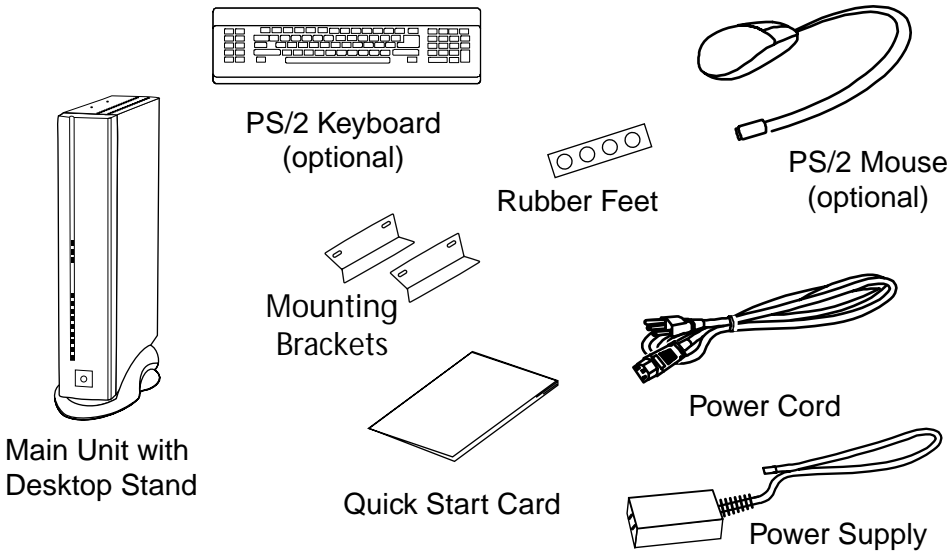
Package Overview

This Windows-based Terminal comes with all the items shown below. Check to make sure your unit is complete. Contact your Sales person immediately if anything is missing.

eTerm 300

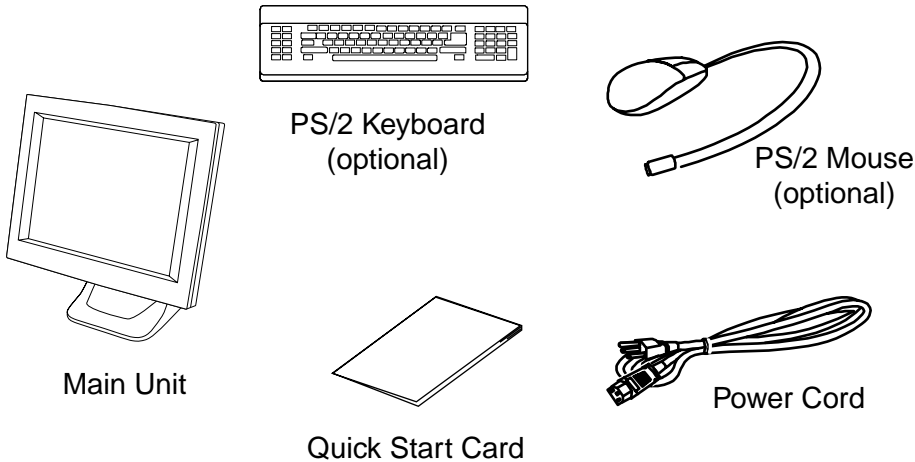


eTerm 360



Note: Rubber feet are provided with the eTerm 360 so that the unit may be placed horizontally.

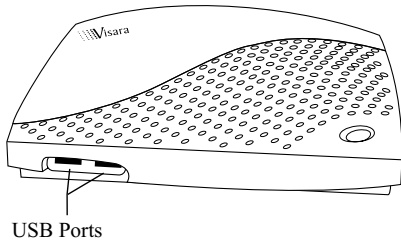
eTerm 760



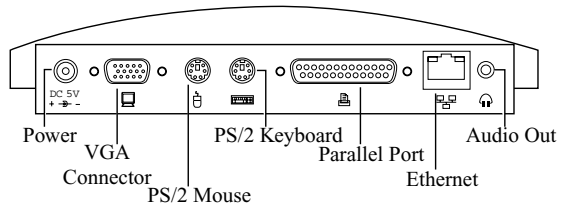
Product Overview

eTerm 300

Front View

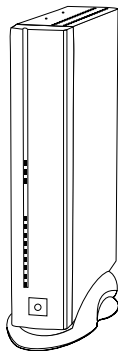


Rear View

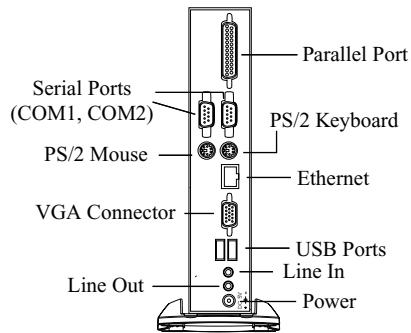


eTerm 360

Front View

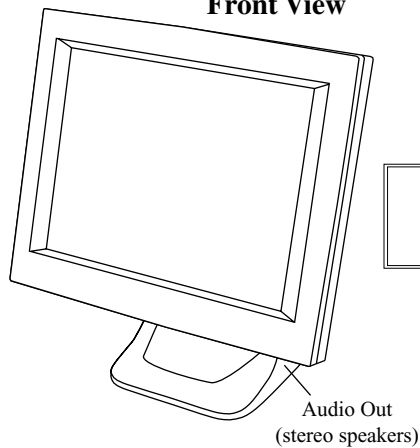


Rear View

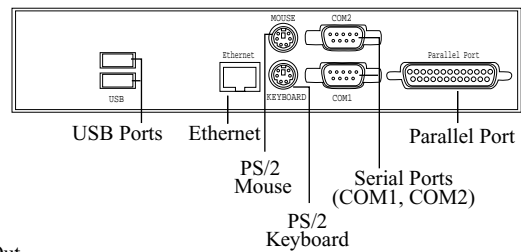


eTerm 760

Front View



Rear View



Connector Introduction

- **Parallel Port Connector**
This connector can be used for printer attachment.
- **PS/2 Keyboard Connector**
This connector is for a standard keyboard using a PS/2 plug (mini DIN).
- **Ethernet Connector**
This connector can be used to connect the built-in 32-bit 10/100-TX Ethernet network LAN Controller to a host or Hub.
- **USB Connectors**
These connectors may be used to connect USB (Universal Serial Bus) peripherals.
- **Line In**
This connector is for connecting a microphone.
- **Power Connector**
eTerm 300/360: connects to the DC cable
eTerm 760: connects the power cord with the terminal and the AC outlet.
- **Serial Port Connectors (COM1, COM2)**
These connectors can be used for pointing devices or other serial devices, such as a mouse or a modem.
- **PS/2 Mouse Connector**
This connector is for a mouse using a PS/2 plug (mini DIN).
- **VGA Connector**
This connector is for displaying on a standard VGA compatible device.
- **Audio Out**
This connector is used to connect to external speakers.

Installation

Connecting the Terminal

Follow these instructions to connect the terminal to its peripheral devices:

1. Connect the monitor to the video connector.
2. Connect the keyboard to the keyboard connector.
3. Connect the mouse to the mouse connector.
4. Connect the 10/100-TX network cable to the RJ-45 network connector.
5. Connect the power cord (or power supply cable) to the power connector, and then to an AC outlet.

Powering On the Terminal

When you have made all the connections, turn on the terminal by pressing the power switch on both the unit and the monitor.

Appendices

Troubleshooting

If you are experiencing trouble with the terminal, refer to the following. If the problem persists, please contact your local Sales Representative.

Problem: Terminal cannot be turned on.

- Check that all I/O and power connectors are correctly and securely connected as described in the “Installation” section.
- Make sure the pins of the connectors are not crooked or broken.

Problem: LAN function cannot be started.

- Ensure that the cable is securely connected to the network RJ-45 connector; and the other end of the cable is also securely connected to its correct device.
- Contact your system administrator.

Problem: Network server cannot be logged on.

- Ensure that the related network setting is correct.
- Contact your system administrator.

Specifications - eTerm 300

Processor	- Sis 550, 200MHz
Main Memory	- 64Mb SDRAM (up to 256MB)
Flash Memory	- DOC 32Mb (up to 64MB)
Graphics	- Resolution: Up to 1280 x 1024 - Colors: 65,536 - Vertical Refresh rate: Up to 85hz
Audio	- 16-bit stereo 44.1KHz audio output
Networking	- TCP/IP with DNS, WINS, and DHCP - 10/100BaseT Ethernet, twisted pair (RJ-45) - Point to Point Protocol (PPP)
I/O Ports	- One 2-pin power connector - One 15-pin female VGA compatible connector - One 8-pin female RJ-45 connector - One 6-pin female PS/2 mouse connector - One 6-pin female PS/2 keyboard connector - One 25-pin female parallel connector - Two Universal Serial Bus connectors
Power Supply	- Input: AC 100~240V, 50~60Hz
Dimensions	- (W x H x D) 7.66” x .15” x 5.96” (194.5mm x 4.0mm x 151.5mm)

Weight	- 1.43 lbs (.65 kg)
Environmental	- Operating Temperature: 32°F~104°F (0°C~40°C) - Storage Temperature: -14°F~140°F (-26°C~60°C) - Humidity: 20% to 80% Non-condensing - Operating Altitude: 0 to 10,000 feet (0 to 3050m)
Safety Regulation	- FCC-B, CE, UL, CUL, TUV

Specifications - eTerm 360

Processor	- Cyrix MediaGXm 300 MHz
Main Memory	- 64Mb SDRAM (up to 256MB)
Flash Memory	- 32Mb DOC (up to 144MB)
Graphics	- Resolution: Up to 1280 x 1024 - Colors: 65,536 - Vertical Refresh rate: Up to 85hz
Audio	- 16-bit stereo 44.1KHz audio output - Microphone input
Networking	- TCP/IP with DNS, WINS, and DHCP - 10/100BaseT Ethernet, twisted pair (RJ-45) - Point to Point Protocol (PPP)
I/O Ports	- One 2-pin power connector - One 15-pin female VGA compatible connector - One 8-pin female RJ-45 connector - One 6-pin female PS/2 mouse connector - One 6-pin female PS/2 keyboard connector - Two 9-pin male serial connectors - One 25-pin female parallel connector - Two Universal Serial Bus connectors
Power Supply	- Input: AC 100~240V, 50~60Hz
Dimensions	- (W x H x D) 2.2" x 9.5" x .85" (56mm x 242mm x 215mm)
Weight	- 4.8 lbs (2.2 kg)
Environmental	- Operating Temperature: 32°F~104°F (0°C~40°C) - Storage Temperature: -14°F~140°F (-26°C~60°C) - Humidity: 20% to 80% Non-condensing - Operating Altitude: 0 to 10,000 feet (0 to 3050m)
Safety Regulation	- FCC-B, CE, UL, CUL, TUV

eTerm 300/360/760 Windows-based Terminals

Specifications - eTerm 760

Processor	- Cyrix MediaGXm 300 MHz
Main Memory	- 64Mb SDRAM (up to 256MB)
Flash Memory	- 32Mb DOC (up to 144MB)
Graphics	- Resolution: Up to 1024 x 768 with high color, 1280 x 1024 with 256 colors - Vertical Refresh rate: Up to 85hz
Audio	- Built-in stereo speakers
Networking	- TCP/IP with DNS, WINS, and DHCP - 10/100BaseT Ethernet, twisted pair (RJ-45) - SNMP support
I/O Ports	- One 3-pin power connector - One 15-pin female VGA connector - One 8-pin female RJ-45 connector - One 6-pin female PS/2 mouse connector - One 6-pin female PS/2 keyboard connector - Two 9-pin male serial connectors - One 25-pin female parallel connector - Two Universal Serial Bus connectors
Power Supply	- Input: AC 100~240V, 50~60Hz
Dimensions	- 395mm x 407.7mm x 178.4mm / 15.5" x 16" x 7" (W x H x D)
Weight	- 5.9 kg/ 12.9 lbs - 6.0 kg/ 13.1 lbs with Touchscreen
Environmental	- Operating Temperature: 32°F~104°F (0°C~40°C) - Storage Temperature: -14°F~140°F (-26°C~60°C) - Humidity: 20% to 80% Non-condensing - Operating Altitude: 0 to 10,000 feet (0 to 3050m)
Safety Regulation	- FCC-B, CE, UL, CUL, TUV

Chapter 2. eTerm Setup Wizard

Configuring the Unit

The first time you power up the system, the **Setup Wizard** will lead you through the configuration process. After the **Setup Wizard** is completed, it will not reappear unless the terminal performs a flash recovery or the terminal is reset to factory defaults.

This section explains each screen of this unit's **Setup Wizard** in sequential order. After you finish the **Setup Wizard**, you can change any configuration setting through the **Control Panel**. You can open the **Control Panel** at anytime by pressing **Start, Settings, Control Panel**.

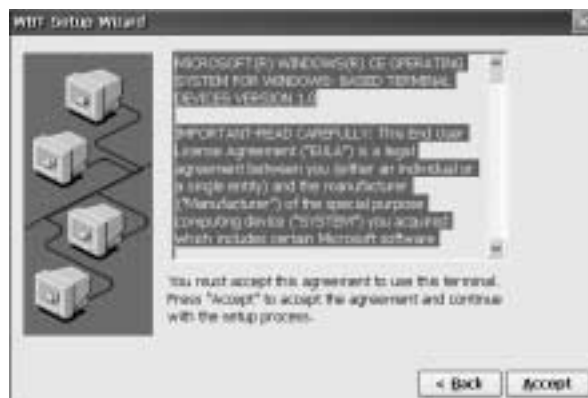
Welcome Screen

When the Welcome screen appears, click **Next**.



License Agreement Screen

The End User License Agreement specifies the legal terms governing your use of this product. To proceed, click **Accept**.



Enable/Disable Dynamic Assignment of IP Address

Network attached devices must contain a unique network identifier. If the network is using TCP/IP as a communication protocol, these identifiers are called “IP addresses”.

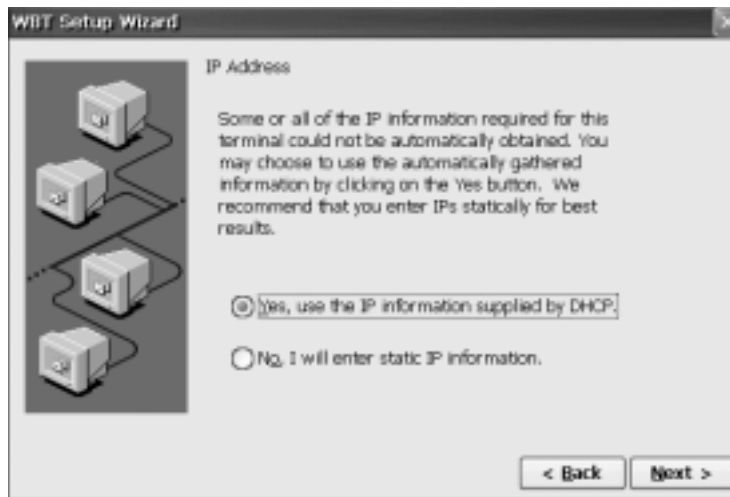
The following series of screens will allow you to choose from two different methods of assigning IP addresses.

Select the method of providing IP addresses

If your network provides DHCP service, and you want it to provide the terminals IP address, leave the first option selected. The unit can get its IP address through a DHCP (Dynamic Host Configuration Protocol) service by default (provided the DHCP service is available and the unit is properly connected to the network). The DHCP will automatically assign an IP Address, which is drawn from a pool of available IP addresses, when a unit is powered on and a request is broadcast over the network.

If you would rather specify a static IP address for the terminal, select the second option. This option is selected automatically if your network does not provide a DHCP service, or if the unit is not properly connected to the network. If your network does not provide DHCP, leave the second option selected.

Select the appropriate method. Click **Next**.



Note: If your network does not provide a DHCP service, but you get the screen shown above, make sure the unit is properly connected to the network, then restart it by cycling the power off and then on.

Specify a Static IP Address

If the method you selected on the prior screen was to enter a static IP Address, the screen below will appear. You will be required to enter the following information onto the screen. You may find it helpful to acquire this information from your system administrator. Supply the following network information:

- **IP address**
Required for identifying this unit to the network. The format will follow the standard addressing format.
- **Subnet Mask**
Required for designating which network the IP Address is a part of.
- **Gateway**
Optional address which identifies the machine through which a subnet communicates with another network.

Complete the information and click **Next**.

WBT Setup Wizard

Specify an IP Address

You must specify the following network information. If you do not know this information, ask your network administrator.

IP Address:	192	168	1	29
Subnet Mask:	255	255	255	0
Gateway:	192	168	1	254

Terminal Name: WBTVSRA

< Back Next >

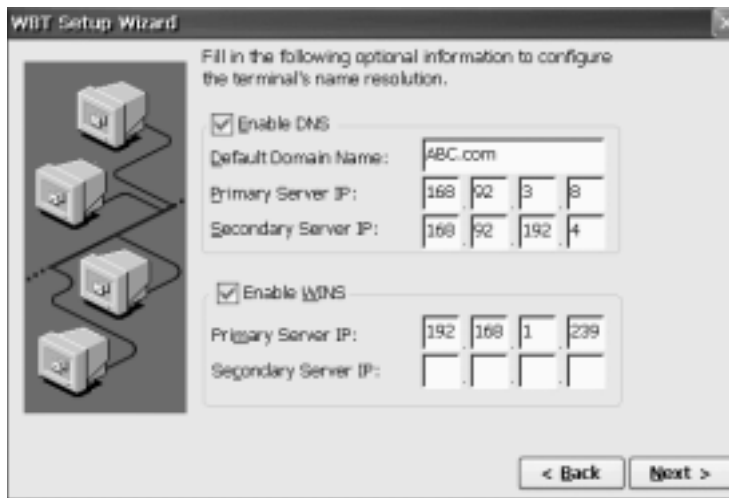
Note: Specify a static IP Address. The Subnet Mask will default to 255.255.255.0.

Enable/Disable Name Resolution Services

The screen shown below will only appear if you choose the Static IP Addressing method. The DHCP method will provide the information required using a name resolution service.

Terminal Servers typically support both DNS (Domain Naming Service) and WINS (Windows Internet Naming Service) name resolution services. This screen allows you enable the unit to use one or both of these resolution services. To ensure that the selected service works properly, they must be available on the network and properly configured.

- To enable DNS, WINS, or both, check the corresponding box. In the text boxes, enter the following information as appropriate for each.



- **Default Domain:**

This refers to the name identifying the TCP/IP domain in which the DNS server resides. Specifying a Default Domain and Primary Server IP Address lets users specify a connection using a host name rather than a FQDN (Fully Qualified Domain Name). For example, the connection could use the server name:
Dept_server instead of **Dept_server.develop.bigblewcorp.com**.
Enabling DNS on this dialog box assumes a DNS service is available and has been properly configured.
- **Primary Server IP Address:**

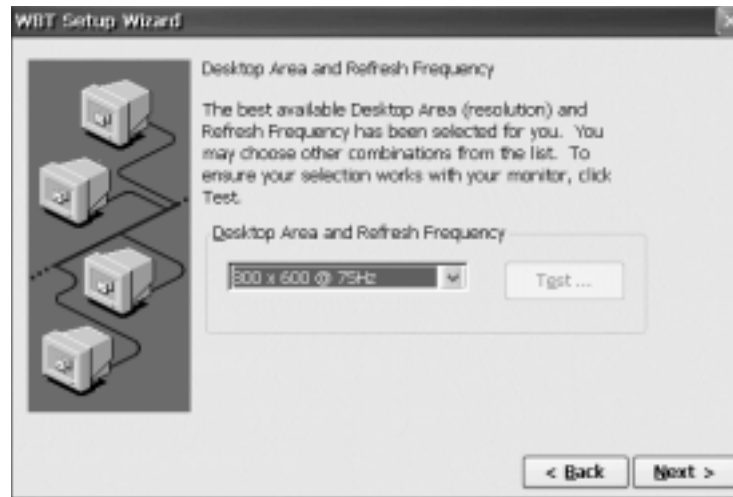
The IP address of the DNS or WINS server to which you want device names routed first for resolution. Windows NT includes WINS, but it must be properly configured.
- **Secondary Server IP Address:**

The IP address of the DNS or WINS server to which you want device names routed if the primary server fails to resolve the name.

Choose Display Resolution

The following screen lets you choose a display resolution.

Select the desktop area and refresh frequency and click **Next**.

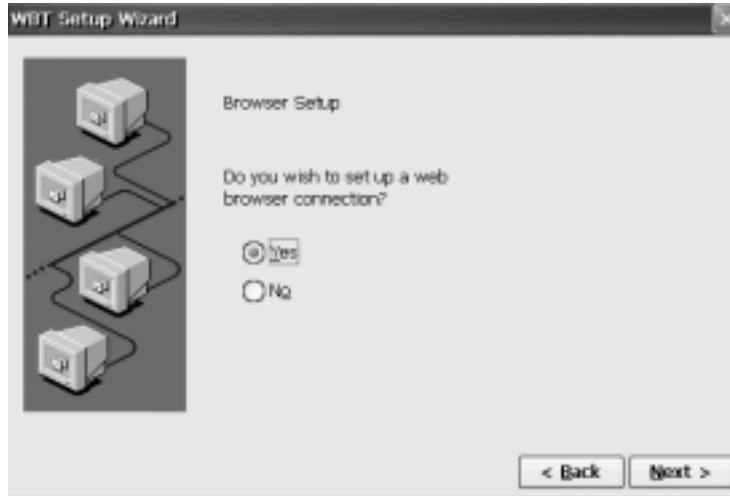


Trying Alternative Display Settings

If you get the default 640x480 desktop, which is standard VGA resolution, the monitor may support a better resolution. If you want to test this, select a higher resolution from the list box, then click **Test**. If the rectangular test is not distorted or skewed, the monitor will support the selected resolution.

Configure Web Access

The following screen allows configuration of the local Internet Explorer browser.

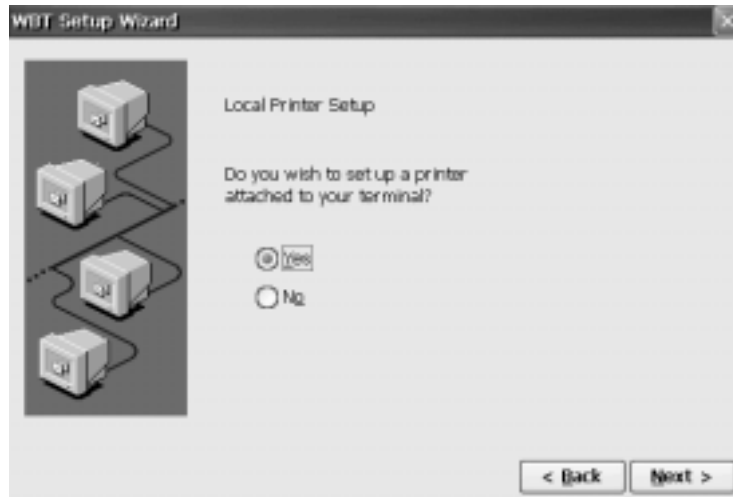


Select **Yes** and click **Next** to access the browser configuration screen. You may configure options such as:

- **Home Page**
Enter the URL of the web site that is to be opened when the browser is started or the Home icon is clicked.
- **Search Page**
Enter the URL of the web site that is to be opened when the Search icon is clicked.
- **Underline Links**
Enable the display of the underline for links on a web page.
- **Font Size**
Select browser font size.
- **Persistent Browser Cache**
If enabled, the browser will remember the most recent URLs.
- **Enable Favorites**
If enabled, the browser will remember the most recent URLs saved as Favorites.
- **Dialup Info**
Enable if the unit is connected to a LAN.
- **Proxy Info**
Enable if a Proxy server is required for accessing the Internet.
If you do not wish to configure the browser at this time or would like to maintain the default configuration, select **No** and click **Next**.

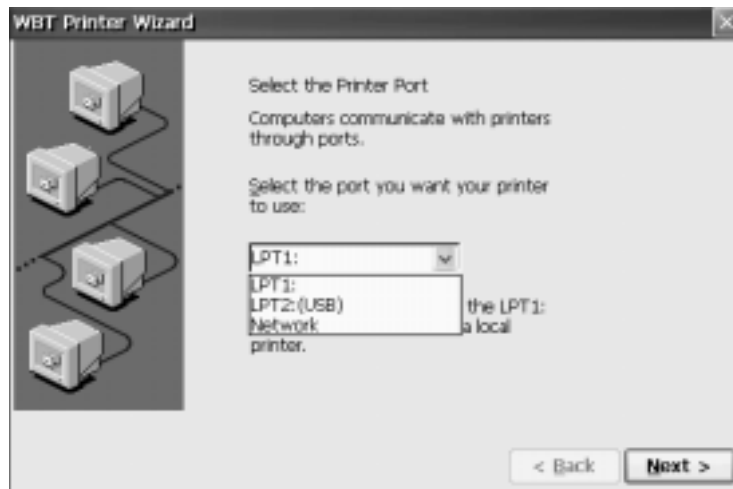
Local Printer Setup

The following screen enables the setup of a local-attached printer to the eTerm. If the eTerm will be connecting to a Windows 2000 Server Terminal Services using the RDP client and a printer is attached locally, then select **Yes**.



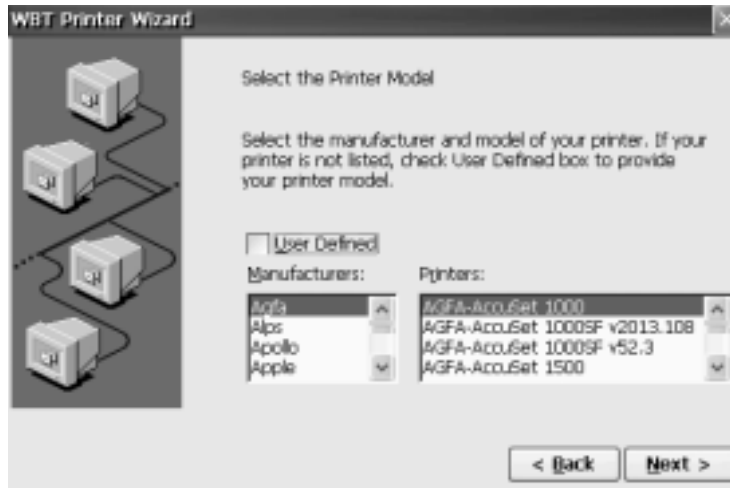
Printer Port Setup

The following screen requires selection of a port where the local-attached printer is connected on the eTerm.



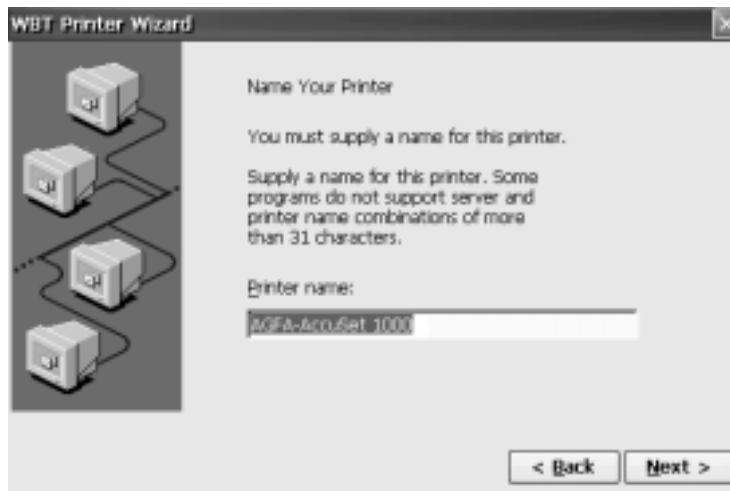
Printer Model Setup

The following screen requires the selection of the printer's Manufacturer and printer model.



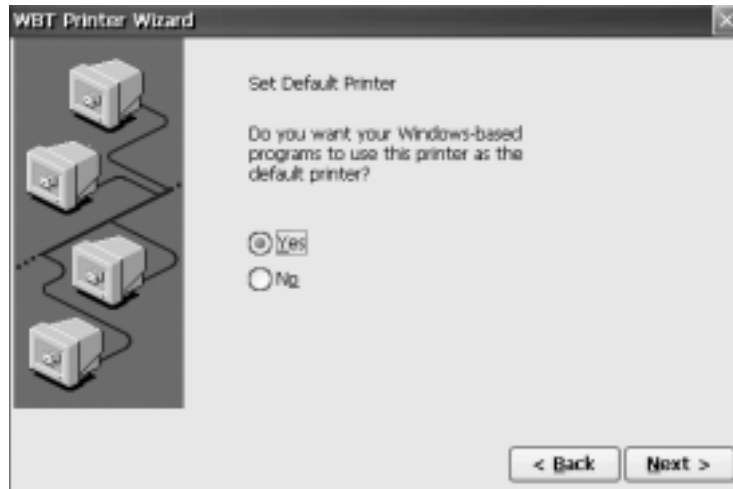
Printer Name

The following screen requires a name be given to the printer. This name will show up for the printer in the Printers folder in Windows 2000.



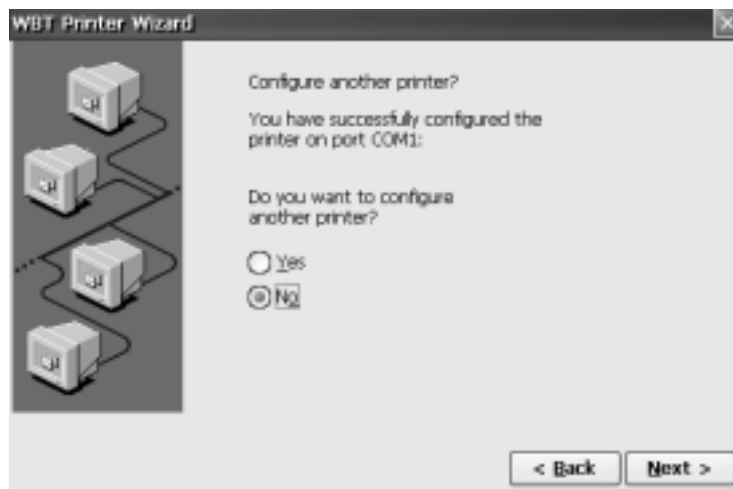
Printer Default

The following screen enables the local-attached printer to be the default printer when running Windows apps on the Windows 2000 server.



Additional Printer Setup

The following screen enables the configuring of another local-attached printer on a different I/O port.



Finishing the Setup Wizard

This is the last screen of the **Setup Wizard**.

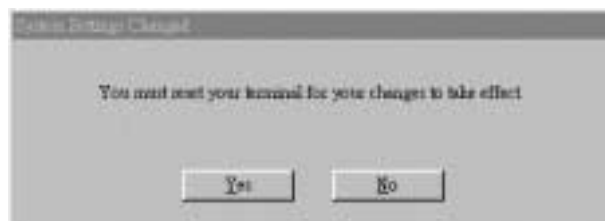
- To review or change settings made on previous pages, click **Back**.
- To apply the settings, click **Finish**.



To change these settings after you have finished the **Setup Wizard**, select **Start, Settings, Control Panel**. See Chapter 4, *Control Panel*, for detailed information.

Restarting after Setup Wizard

You will now need to restart your system so that the changes you made will take effect. Click **Yes**.



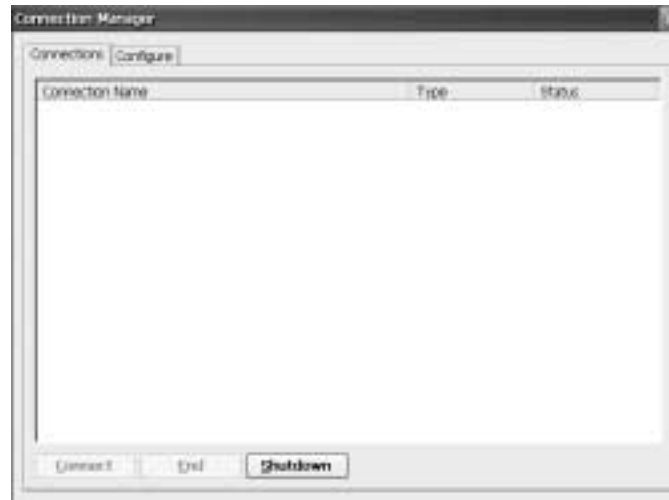
Chapter 3. *e*Term Terminal Connection

Creating Connections to Terminal Server Host

For each client available on a unit, you can define any number of host connections. The *e*Term includes Microsoft Terminal Server Client for ICA and RDP. For information on creating connections with alternate clients, refer to the documentation pertaining to that client. Your unit may contain additional client software. If so, you can select alternate clients for creating a connection in either of the following ways shown in this chapter.

Configuring Connection Manager

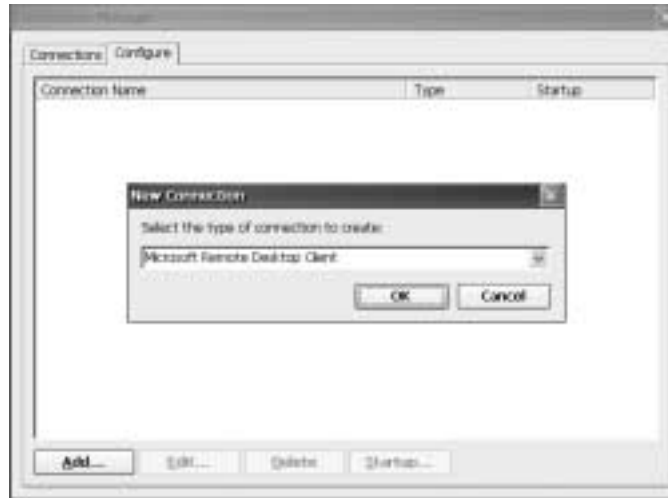
Begin Connection Manager configuration by clicking the **Connection Manager** icon, located on the *e*Term desktop. The Connection Manager Connections screen will appear (pictured below). The existing connections will be listed on this screen.



To add, edit, or delete a connection click the **Configure** tab. Click the **Add** button to create a new connection. A detailed explanation for each configuration screen is given on the following pages.

New Connection

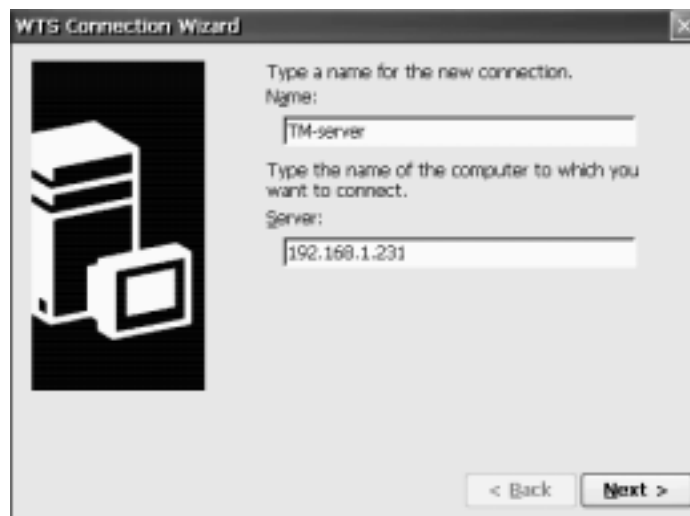
Select the type of connection to create from the drop-down box. The connection choices are Citrix ICA Client, Microsoft Remote Desktop Client, and Visara HostConnect Client. Click **OK** to continue.



Microsoft Remote Desktop Client Connection

Specify Connection Name and Server

Type a name for the new connection in the **Name** field and the name of the computer to which you want to connect in the **Server** field.



- **Name:** Enter the text that clearly identifies the connection you are creating. This might be the name of the Terminal Server to which it connects, for example “TSE-1” or “Engineering”, or perhaps the type of application or data provided by that server, “Mail” or “Accounting”. The name can have up to 32 characters.

- **Server:**
Enter the IP address or, if DNS or WINS are enabled, the name of the Terminal Server where you want this connection to login. If you specified a default domain when you configured DNS (See “ Enable/Disable Name Resolution Server”), you can specify just the Terminal Server name here, for example “Dept_Server”. However, if you do not specify a default domain, or if the DNS server is in a different TCP/IP domain from the terminal, then you must specify a Fully Qualified Domain Name (FQDN) here, for example:
“Dept_server.develop.bigblewcorp.com.”
If neither DNS or WINS is configured, you must use the IP address of the Terminal Server.
- **Low Speed Connection:**
If the physical connection to the Terminal Server is through a low bandwidth line (WAN or serial line), rather than over an Ethernet cable, check this box.


Click **Next** to continue.

Automatic Logon

If you do not need an **Automatic Logon** to the server, click **the Next** button to continue.



If you want to automatically log on to the server, select **Automatic Logon**. Enter the information in **User Name**, **Password**, and **Domain** fields. Click **Next** button to continue.

 **Caution:** Depending on your environment, this may pose an unacceptable security risk. If so, leave this feature disabled.

- **Username:**
The User ID can be a local or global user account set up on a particular Server.
- **Password:**
The password associated with the user ID specified above.
- **Domain:**
If the Terminal Servers in which you are creating the connection belongs to a Windows NT domain, and the Primary Domain Controller is performing user authentication, enter the Windows NT domain name such as “**Dept_Server**”. However, if the Terminal Server is not a member of a Windows NT domain, or if you want user authentication performed locally, enter the name of that Terminal Server.

Selecting Windows NT Desktop or Application to Run at Logon

On connection, the **Windows NT Desktop** is displayed by default. If this should remain unchanged, click **Next**.



You can select **Application file name** and enter the name of the application you would like to start upon connection. When specifying an application, you may also specify a working directory.

- **Desktop:**
Select this option if you want the connection to display Windows NT desktop.
- **Application file name:**
Select this option if you want an application to start automatically as soon as the connection is established. Enter the directory path and the filename of the desired application. If the path to the application is not specified in the Path command on the Terminal Server, you must specify the full pathname. When a user activates this connection, the application starts automatically. When the user closes the application, the connection also terminates.
- **Working directory:**
If you have specified an application for the connection to start, you can also specify the pathname to a working directory for it to start in. Any data files generated by the application are saved by default in the directory specified. If you do not specify a working directory, data files are saved in the user’s home directory on the Terminal Server.

Click **Next**.

Completing the Connection

When the following dialog box appears, you have successfully created a new connection. To review or change settings, click **Back**. Click **Finish** to complete your new connection. The new connection will now be included in the list of connections that you see when you open **Connection Manager**.



Deleting a Connection

To delete an existing connection, complete the following steps:

- Select the connection you want to delete.
- Click **Delete**. The **Confirm Connection Delete** dialog box will appear. Click **Yes** to complete the deletion. Click **No** to cancel the deletion.

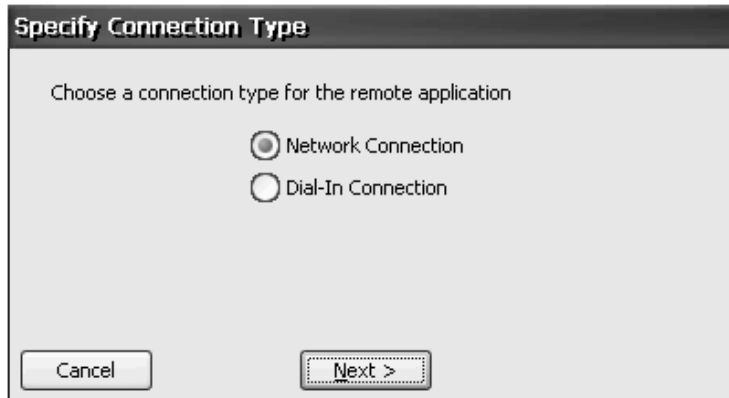
Modifying a Connection

To modify attributes of an existing connection, complete the following steps.

- Insure that the connection is not active prior to modification.
- Select the connection you want to modify.
- Click **Edit**.
- The client's utility for modifying a connection appears. Make the desired changes.

Citrix ICA Client Connection

If you select **ICA Connect** from Connection Manager, the **ICA Connection** dialog box will appear. Use this application to create a Citrix ICA connection. Click the **Add** button to create a new connection. The Specify Connection Type dialog box will appear.

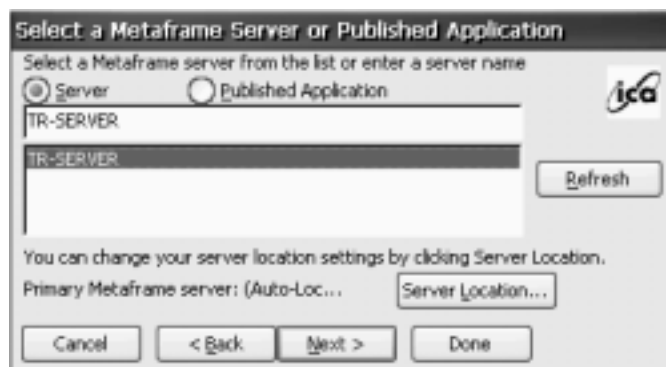


Choose **Network Connection** or **Dial-In Connection** for the remote application.

Creating a Network Connection

This type of connection requires a direct Ethernet connection to the network. Choose **Network Connection** and click **Next**.

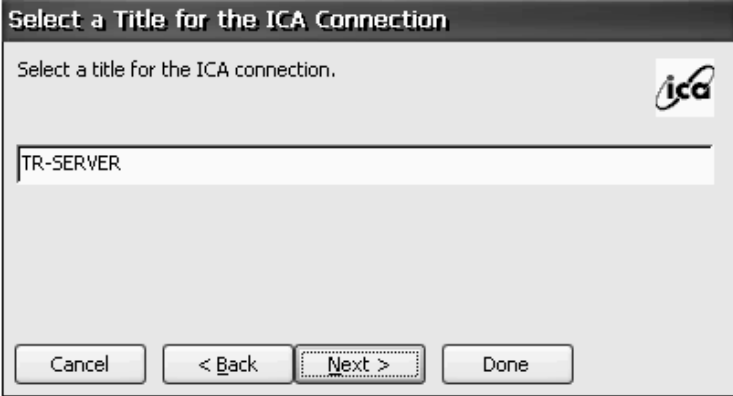
Select the **Citrix Server, Published Application**, and type a server name in the field.



To specify or change the location of your server, click **Server Location**.

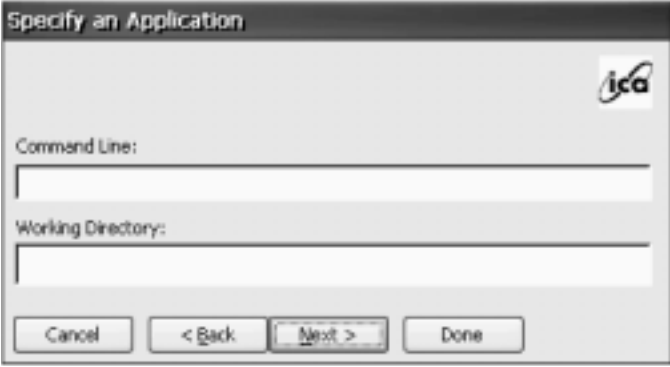
Click **Next**.

Enter a name for the ICA connection. Click **Next** to continue.



The dialog box is titled "Select a Title for the ICA Connection". It contains the instruction "Select a title for the ICA connection." and the ICA logo. A text input field contains the text "TR-SERVER". At the bottom, there are four buttons: "Cancel", "< Back", "Next >", and "Done".

If desired, you can specify the **Command Line** and **Working Directory** of the application file. Or leave those fields blank and click **Next** to run a **Windows NT Desktop**.



The dialog box is titled "Specify an Application". It contains the ICA logo and two text input fields: "Command Line:" and "Working Directory:". At the bottom, there are four buttons: "Cancel", "< Back", "Next >", and "Done".

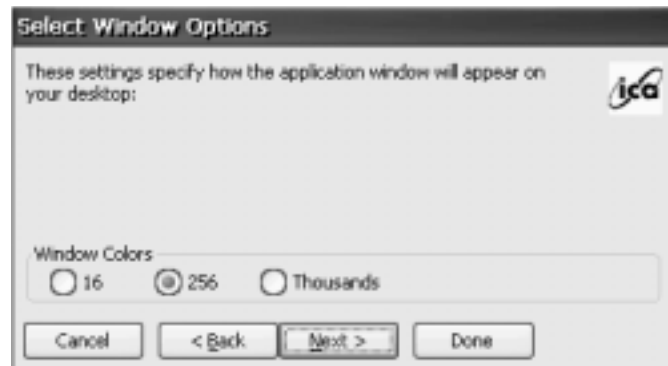
If you want to automatically log on to the server, enter the information in **User Name**, **Password**, and **Domain** fields. If not, leave these fields blank and you will be prompted for this information when connecting to a server. Click **Next** to continue.



The dialog box is titled "Specify Logon Information". It contains the instruction "If desired, you can specify logon information to be used when connecting to the remote application." and the ICA logo. There are three text input fields: "Username:" with the text "Peter", "Password:" with masked characters "*****", and "Domain:" with the text "IA division". There is also a checkbox labeled "Allow Smart Card logon" which is currently unchecked. At the bottom, there are four buttons: "Cancel", "< Back", "Next >", and "Done".

eTerm 300/360/760 Windows-based Terminals

Choose the desired color resolution. Click **Next** to continue.



The Compression, Encryption and Sound dialog box will appear with the following selections:



- **Use Printer Configuration Utility:**
Check this option if a printer is local - attached to the unit and connecting to a Winframe or Metaframe 1.0 Citrix server. This option should be unchecked if connecting to a Metaframe 1.8 Citrix server.
- **Compress Data Stream:**
Reduces the amount of data transferring between the terminal and server.
- **Enable Sound:**
Check this option to enable sound support. Published applications will be able to play sounds on your client.
 - **High** - This value provides the greatest audio quality but should only be used when bandwidth consumption is not a concern.
 - **Medium** - Using this value results in less bandwidth consumption than when using High. Compression of sound data provides greater bandwidth efficiency but reduces sound quality somewhat. This value is recommended for most LAN-based connections.
 - **Low** - This value offers the most efficient use of bandwidth but also decreases sound quality severely. This value is recommended for low-bandwidth connections, including most modem connections.

- **SpeedScreen:**
SpeedScreen Latency Reduction improves performance over high latency connections by providing instant feedback to the user in response to typed data or mouse clicks.
- **Encryption level:**
Select the level of encryption for the ICA connection. The default level is **Basic**. Strong encryption using the RC5 algorithm is available with SecureICA Services. SecureICA Services enables RSA RC5 encryption with 40, 56, or 128-bit session keys. Select RC5 128-bit Login Only to use encryption during authentication. The Citrix server must be configured to allow the selected encryption level or greater. For example, if the Citrix server is configured to allow RC5 56-bit connections, the ICA client can connect with RC5 56 or 128-bit encryption.

Note: Selecting RC5 encryption disables automatic logon to the Citrix server.

Click **Next** to continue to the **Firewall Settings** dialog box.

The screenshot shows the 'Firewall Settings' dialog box. It features a 'Proxy' section with a dropdown menu currently set to 'none (direct)'. Below this is a note: 'NOTE: Enable SSL or 128-bit encryption to assure a secure connection'. There are input fields for 'Proxy address' and 'Port' (set to 1080). To the right is an 'SSL/TLS Relay' section with input fields for 'Address of relay' and 'Port' (set to 443). A checkbox labeled 'Use alternate address through firewalls' is present and unchecked. At the bottom, there are three buttons: 'Cancel', '< Back', and 'Done'.

- **Configuring the ICA Client to Use a SOCKS Proxy**
If you are using a SOCKS proxy server to limit access to your Citrix servers, you must configure a SOCKS proxy server to handle connections between clients and the server. You can place the proxy server on either side of the firewall, or in some situations, on both sides of the firewall. You can configure a default SOCKS proxy for all connections or a SOCKS proxy with a specific connection entry.
- **Configuring Alternate Address Translation**
If the ICA Client is outside a firewall that uses address remapping, you must configure the ICA Client to use the alternate address returned by the master ICA Browser. This is necessary even if you are not using a SOCKS proxy server.

Completing the Connection

To review or change settings, click **Back**. Click **Done** to complete your new connection. The new connection will now be included in the list of connections that you see when you open ICA Connect.

Deleting a Connection

To delete an existing connection, complete the following steps:

- Select the connection you wish to delete.
- Click **Delete**. The **Confirm Connection Delete** dialog box will appear. Click **Yes** to complete the deletion. Click **No** to cancel the deletion.

Modifying a Connection

To modify attributes of an existing connection, complete the following steps.

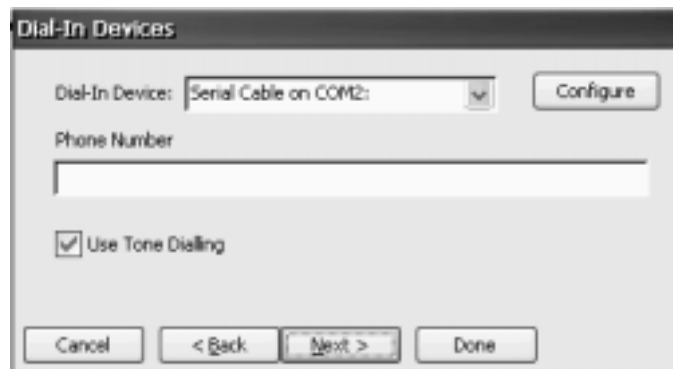
- Insure that the connection is not active prior to modification.
- Select the connection you wish to modify.
- Click **Edit**.
- The client's utility for modifying a connection appears. Make the desired changes.

Creating a Dial-In Connection

This type of connection is made through an attached external modem.

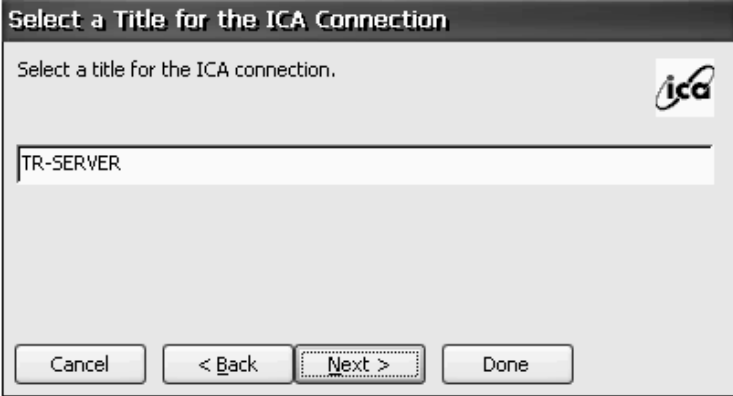


Choose **Dial-In Connection** and click **Next**.



Select the serial Com port used for the modem connection. Click on the **Configure** button to specify port settings and call options. Click **Next** to continue.

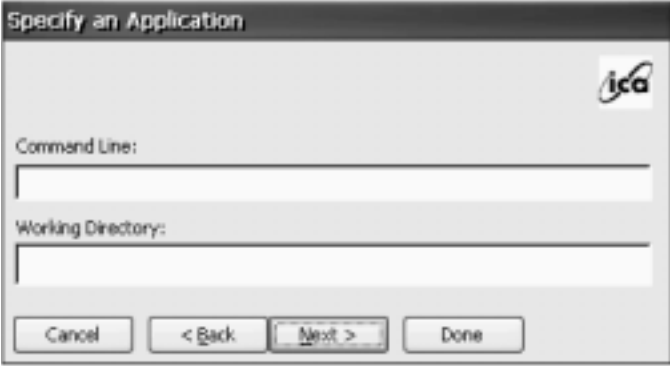
Enter a name for the ICA connection.



The dialog box is titled "Select a Title for the ICA Connection". It contains the instruction "Select a title for the ICA connection." and the ICA logo. A text input field contains the text "TR-SERVER". At the bottom, there are four buttons: "Cancel", "< Back", "Next >", and "Done".


Click **Next** to continue.

If desired, you can specify the **Command Line** and **Working Directory** of the application file. Or leave those fields blank and click **Next** to run a **Windows NT Desktop**.



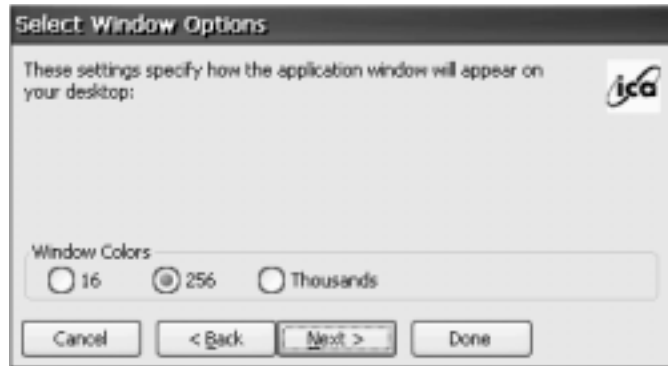
The dialog box is titled "Specify an Application". It contains the ICA logo and two text input fields: "Command Line:" and "Working Directory:". At the bottom, there are four buttons: "Cancel", "< Back", "Next >", and "Done".

If you want to automatically log on to the server, enter the information in **User Name**, **Password**, and **Domain** fields. If not, leave these fields blank and you will be prompted for this information when connecting to a server. Click **Next** to continue.



The dialog box is titled "Specify Logon Information". It contains the instruction "If desired, you can specify logon information to be used when connecting to the remote application." and the ICA logo. There are three text input fields: "Username:" with the text "Peter", "Password:" with masked characters "*****", and "Domain:" with the text "IA division". There is also a checkbox labeled "Allow Smart Card logon" which is currently unchecked. At the bottom, there are four buttons: "Cancel", "< Back", "Next >", and "Done".

Choose the desired color resolution. Click **Next** to continue.



The Compression, Encryption and Sound dialog box will appear with the following selections:



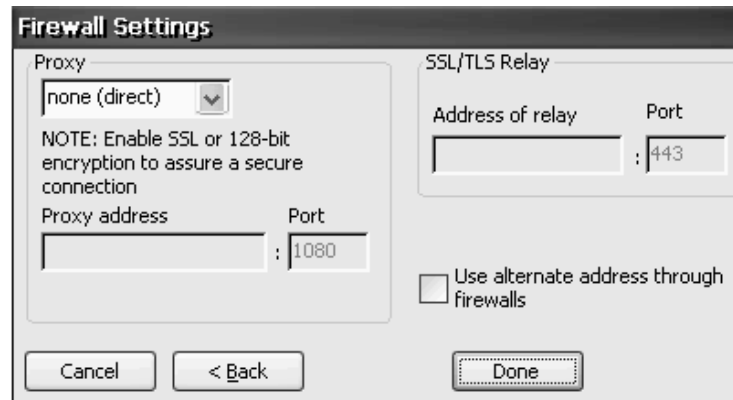
- **Use Printer Configuration Utility:**
Check this option if a printer is local - attached to the unit and connecting to a Winframe or Metaframe 1.0 Citrix server. This option should be unchecked if connecting to a Metaframe 1.8 Citrix server.
- **Compress Data Stream:**
Reduces the amount of data transferring between the terminal and server.
- **Enable Sound:**
Check this option to enable sound support. Published applications will be able to play sounds on your client.
 - **High** - This value provides the greatest audio quality but should only be used when bandwidth consumption is not a concern.
 - **Medium** - Using this value results in less bandwidth consumption than when using High. Compression of sound data provides greater bandwidth efficiency but reduces sound quality somewhat. This value is recommended for most LAN-based connections.
 - **Low** - This value offers the most efficient use of bandwidth but also decreases sound quality severely. This value is recommended for low-bandwidth connections, including most modem connections.
- **SpeedScreen:** SpeedScreen Latency Reduction improves performance over high latency connections by providing instant feedback to the user in response to typed data or mouse clicks.

- **Encryption level:**

Select the level of encryption for the ICA connection. The default level is **Basic**. Strong encryption using the RC5 algorithm is available with SecureICA Services. SecureICA Services enables RSA RC5 encryption with 40, 56, or 128-bit session keys. Select RC5 128-bit Login Only to use encryption during authentication. The Citrix server must be configured to allow the selected encryption level or greater. For example, if the Citrix server is configured to allow RC5 56-bit connections, the ICA client can connect with RC5 56 or 128-bit encryption.

Note: Selecting RC5 encryption disables automatic logon to the Citrix server.

Click **Next** to continue to the **Firewall Settings** dialog box.



- **Configuring the ICA Client to Use a SOCKS Proxy**

If you are using a SOCKS proxy server to limit access to your Citrix servers, you must configure a SOCKS proxy server to handle connections between clients and the server. You can place the proxy server on either side of the firewall, or in some situations, on both sides of the firewall. You can configure a default SOCKS proxy for all connections or a SOCKS proxy with a specific connection entry.

- **Configuring Alternate Address Translation**

If the ICA Client is outside a firewall that uses address remapping, you must configure the ICA Client to use the alternate address returned by the master ICA Browser. This is necessary even if you are not using a SOCKS proxy server.

Completing the Connection

To review or change settings, click **Back**. Click **Done** to complete your new connection. The new connection will now be included in the list of connections that you see when you open ICA Connect.

Deleting a Connection

To delete an existing connection, complete the following steps:

- Select the connection you want to delete.
- Click **Delete**. The **Confirm Connection Delete** dialog box will appear. Click **Yes** to complete the deletion. Click **No** to cancel the deletion.

Modifying a Connection

To modify attributes of an existing connection, complete the following steps.

- Insure that the connection is not active prior to modification.
- Select the connection you want to modify.
- Click **Edit**.
- The client's utility for modifying a connection appears. Make the desired changes.

Visara HostConnect Client Connection

HostConnect is the application which provides simultaneous connections to a variety of host systems using the Telnet protocol over TCP/IP on an Ethernet network. HostConnect provides TN5250 emulation for access to IBM AS/400 systems, TN3270 terminal emulation for connection to IBM Mainframe systems, and ASCII terminal emulation for connection to RS/6000, DEC, HP and other ASCII host computers. In addition, HostConnect supports the TN5250E and TN3270E protocols, giving you access to advanced features such as device-name selection, sign-on bypass and printing.

Host sessions can be configured to start automatically each time *e*Term is started or you can start sessions as needed from the HostConnect Desktop or the menu bar in an emulation session. HostConnect session types include:

- **TN5250**
TN5250 is a full featured emulation of the IBM 5250 twinax terminal and includes support for Field Attributes, Text Assist and other unique 5250 functions. Local screen printing is supported to a local-attached PCL5 printer ONLY.
- **TN5250E Printer**
TN5250E Printer emulating the IBM 3812-1 supports AS/400 Host Print Transform using the AS/400 resident print drivers.
- **TN3270**
Emulating the IBM 3278 coax terminal, it includes full terminal emulation support for 3270 keys and the screen attributes of a 3278 terminal session. Local screen printing is supported to a local-attached PCL5 printer ONLY.
- **TN3270E Printer**
TN3270E Printer emulating the IBM 3287 supports host LU1 and LU3 data streams. This driver ONLY supports PCL5 printers.
- **ASCII**
HostConnect also provides VT100 and 220 terminal emulation in a graphical window. It contains substantial enhancements to the standard VT functions, including local screen print to a local-attached PCL5 printer and color command support. These features can be selected either from the pull-down menus or VT command sequences.

Configuring Host Connections

New Connection



Create a new HostConnect connection by clicking the **New Connection** button in the HostConnect main menu. The New Connection window will be displayed. The following configuration items are also available from the Edit Connection button for existing connections.

Connection Name

Choose a name to identify each connection you configure. The name can be up to sixteen characters long. When you start the connection, the name you chose will be shown in the title bar of the open Session Window.

Connection Type

The connection type is dependent upon the host system to which you will connect. AS/400 hosts typically use TN5250 or TN5250E. IBM mainframes use TN3270 and TN3270E. UNIX and most non-IBM computers use ASCII emulation. To select a Connection Type, click on the down arrow at the right of the drop-down list box and choose the proper Connection Type for your host.

Host Name / Address

The eTerm supports Domain Name Services (DNS) names to make connections with network servers. The Host Name/Address field therefore supports DNS names of the host system with which a connection is to be established. For example, the Library of Congress TN3270 server name is "LOCIS.LOC.GOV". This field also supports the IP address of the host system with which a connection is to be established. The Library of Congress IP address for example, is 140.147.254.3.

Terminal Type

HostConnect supports various models of 3270, 5250 and ASCII terminals as described below:

- **5250 Terminals**

HostConnect supports emulation of a variety of 5250 terminal models, including 132-column mode and Text Assist. If the TN5250E protocol is selected and supported by the host, advanced features such as device-name selection and sign-on bypass are available. In addition, HostConnect supports a printer emulation under TN5250E. Emulation of the following 5250 terminal models is included in HostConnect. All models support Text Assist:

<u>Model</u>	<u>Screen Size</u>
3179-2	24 x 80
3180-2	27 x 132
3196	24 x 80
3477-FC	27 x 132
3477-FG	27 x 132
3487-HA	27 x 132
3487-HC	27 x 132
5251-11	24 x 80
5291-1	24 x 80

- **5250 Printer**

For 5250 printer emulation select connection type TN5250E and terminal type 3812. For additional printer setup information see the section titled Additional Connection Capabilities.

- **3270 Terminals**

HostConnect supports emulation of a variety of 3270 terminal models and includes support for extended highlighting, extended color, and alternate screen sizes. In addition, if the TN3270E protocol is selected and supported by the host, more advanced features such as device-name selection and reporting and access to the SNA Bind information are enabled.

Emulation of the following 3270 color and mono terminal models is supported:

<u>Model</u>	<u>Screen Size</u>	<u>EAB</u>
3278-2	24 x 80	Yes
3278-3	32 x 80	Yes
3278-4	43 x 80	Yes
3278-5	27 x 132	Yes

- **3270 Printer**

For 3270 printer emulation, select connection type TN3270E and Terminal type 3287. For additional printer setup information see the section titled “Additional Connection Capabilities”.

- **ASCII Terminals**

HostConnect supports emulation of several ASCII terminal models and includes support for double-high and double-wide characters, smooth scrolling and extended highlighting.

Emulation of the following ASCII terminal models is supported:

Model	Features
VT100	basic ASCII terminal
VT220	double-high and double-wide characters, smooth scrolling and extended highlighting

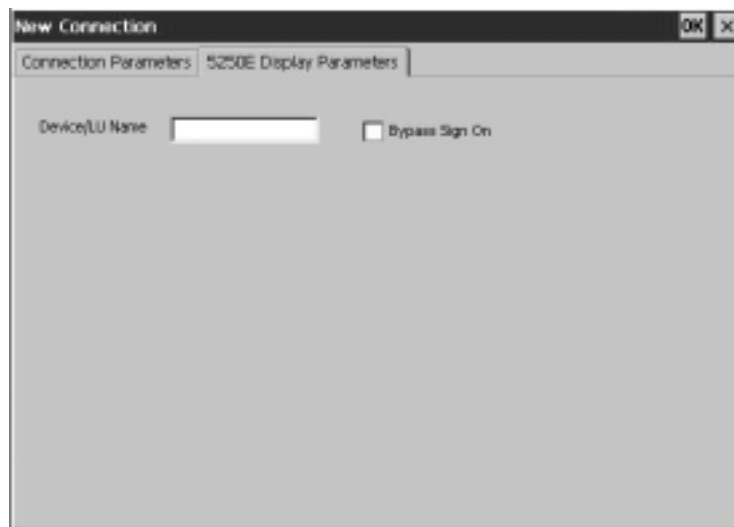
Timeout

The number of seconds HostConnect will wait for a host connection to be established. If a connection is not established within that time, the message “timed out” will be displayed. The default is 10 seconds.

Depending upon the Connection Type you select, additional configuration capabilities may be available.

Additional Connection Capabilities

Display Parameters, TN5250E



The 5250E Display Parameter screen allows entry of the session Device or LU Name. If **Bypass Sign On** is also selected, the screen provides input fields to support this function. The **Bypass Sign On** is by default disabled. If you enable Bypass Sign-On, you must enter a User Name and Password. Optionally, you may enter Program, Current Library and Initial Menu. These fields are the same as those displayed on your sign on screen. Optionally you may choose to encrypt your password. When enabled the password is encrypted when transmitted over the network under TN5250E. This is disabled by default.

Printer Parameters, TN5250E

The screenshot shows a 'New Connection' dialog box with a tab labeled '5250E Printer Parameters'. The fields are as follows:

- Device Name: [Text Input]
- Message Queue: [Text Input] Name, [Text Input] Library
- Font: [Text Input] (value: 11), Form Feed: [Dropdown]
- Host Transform: [Dropdown] (value: *YES)
- Host Transform Parameters:
 - Type & Model: [Dropdown]
 - Paper Source 1: [Dropdown]
 - ASCII 899: [Text Input]
 - Paper Source 2: [Dropdown]
 - Envelope: [Dropdown]
- Workstation Customizing Object: [Text Input] Name, [Text Input] Library

When TN5250E and terminal type 3812 are selected on the Connection Parameters screen a new tab, 5250E Printer Parameters, will be displayed. The 5250E Printer Parameter screen provides fields for entering additional settings for the printer emulation. Once the settings are entered correctly the TN5250E printing will be automatically configured on the AS/400 system. OS/400 versions prior to V4R3 may require certain PTFs. Check with IBM to determine what PTFs you may require to support TN5250E printing. Some fields are required as defined below:

- **Device Name**
This field entry is required. The name is arbitrary but must be unique. The name will usually be supplied by the System Administrator.
- **Message Queue**
Not required. This field will identify the message queue where operational messages are sent.
- **Font**
This field entry is required. The default value is **11**.
- **Form Feed**
Not required. Identifies the type of forms used.
- **Host Transform**
This field entry is required. The default value is ***YES**.
- **Host Transform Parameters**
The Type and Model field is required. This field identifies the attached printer type. If your printer type is not listed use a printer type with a compatible printer command set. The other fields are not required.
- **Workstation Customizing Object**
Not required. Allows customization of the printer command stream.

Display Parameters, TN3270

- **Attention Key Action and System Request Key Action** - You can override the default action for the Attention or System Request Key while connected to a host system. This would be necessary if the host stops responding to HostConnect and the host also ignores the default Telnet commands it receives when those keys are pressed.



Display Parameters, TN3270E

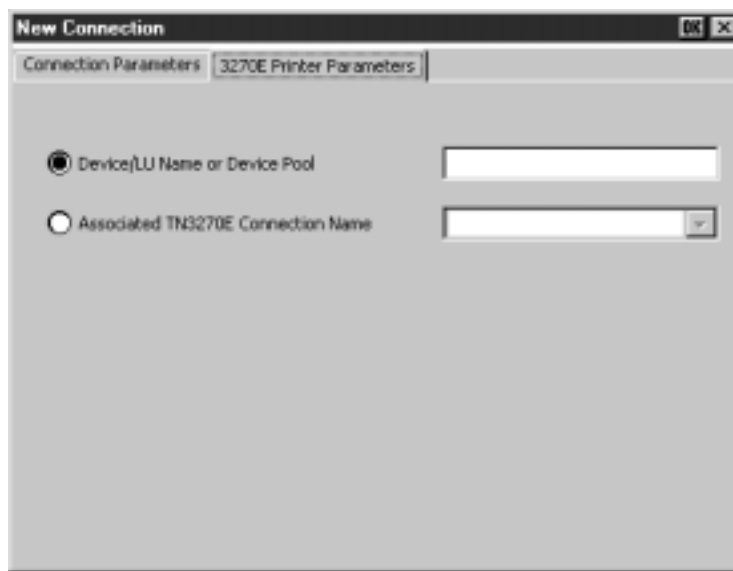
Enter your device or LU name.



Printer Parameters, TN3270E

When TN3270E and terminal type 3287 are selected on the Connection Parameter screen, a new tab, 3270E Printer Parameter, will be displayed. The 3270E Printer Parameter screen provides the following options:

- **Device/LU Name or Device Pool**
Select this option to allow entry of a device name, LU name or device pool in the corresponding field.
- **Associated TN3270E Connection Name**
Select this option to define a “paired” printer device with a predefined TN3270E terminal. The pulldown field will list all TN3270E terminals that are configured on the eTerm Terminal Connection Manager.



Note: The 3287 printer client supports host LU1 and LU3 data streams for PCL5 printers only.

Chapter 4. *e*Term Terminal Properties

Configuring the Unit via Control Panel

When you start your unit the first time, or reset factory defaults, or when the terminal recovers flash software, the **Setup Wizard** leads you through the process of setting essential parameters, including the IP address, name resolution, and display characteristics.

After you have performed initial configuration through the **Setup Wizard**, you can modify configuration settings through the **Control Panel**.

Accessing the Control Panel

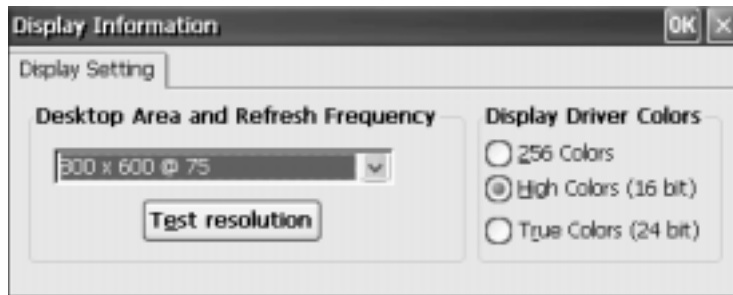
To access the **Control Panel** select the **Start** button on the desktop. From the menu, select **Settings** and then **Control Panel**.



Through the **Control Panel**, you can perform the following configuration tasks:

- Check hardware and software status of the terminal.
- Change the network configuration.
- Reset the terminal to standard factory defaults.
- Change attributes for the keyboard, mouse and display.
- Adjust the audio volume and sounds properties.
- Specify server for software updates.
- Add/configure a local -attached printer.
- Enable/configure security settings for Connection Manager and Terminal Properties.
- Configure Advanced Settings such as DHCP Options, Global ICA Settings and SNMP.
- Configure local browser settings (if applicable).

Display



Select the desired resolution, refresh rate, and colors. To determine whether the settings you have selected are supported, click **Test Resolution**. If the rectangular test is not distorted or skewed, the monitor will support the selected resolution. If the settings are satisfactory, click **OK** to close the Display window.

FTPUpdate

Select the desired upgrade information in the fields defined below.



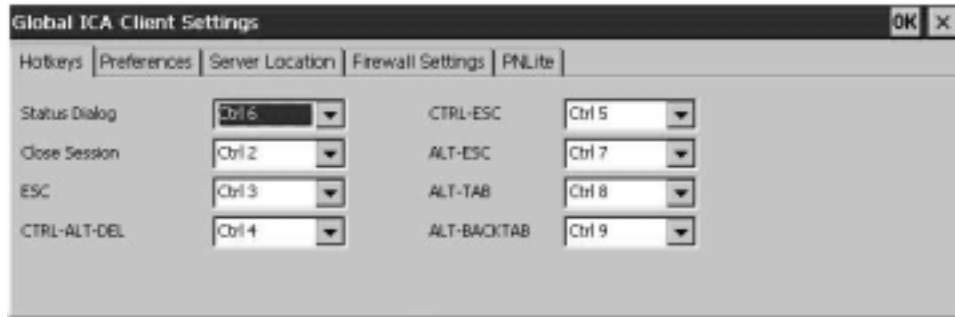
- **Server** – Enter the FTP server IP address
- **File** – Enter the path and filename of the upgrade image file
- **User Name** – Enter the FTP Server user name
- **User Password** – Enter the FTP Server password for the user name listed above.

To begin the upgrade click **Download**. To discard the settings and exit FTPUpdate, click **Cancel**.

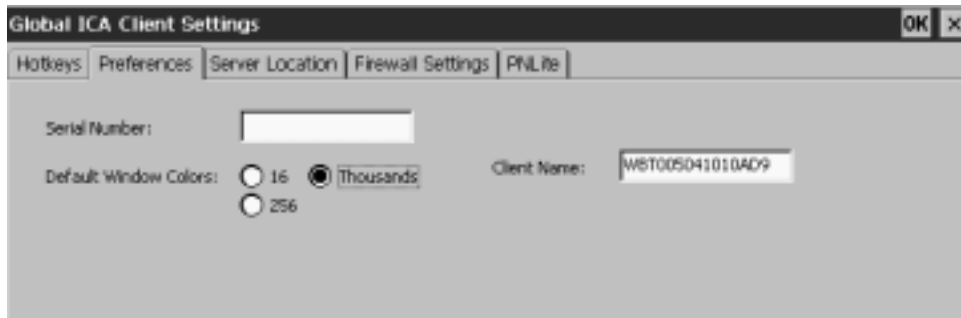
ICA Setting

This displays the Global ICA Client Settings Window. The Global ICA Client settings will allow the user to define the default settings for all remote ICA application entries. Some of these global setting may be overridden by entering your own values when creating a new ICA connection within ICA Connect.

- **Hotkeys Tab** – These keys can be used within ICA sessions to control various ICA functions. Consult your System Administrator before modifying any of these selections.

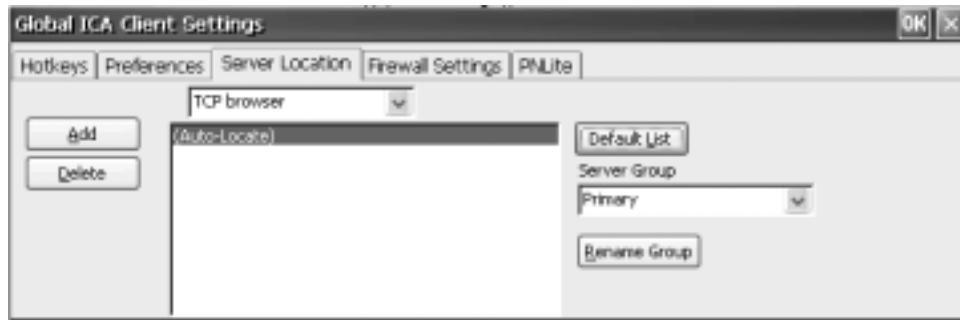


- **Preferences Tab**



- **Serial Number** – This is the serial number of the ICA software. This serial number is used when connecting to certain versions of Winframe software that requires each ICA client to have a Citrix PC client pack serial number in order to connect to the server.
- **Default Window Colors** – Select either 16, 256, or Thousands (65536 colors only supported with Citrix Metaframe Feature Release 1).
- **Client Name** – Allows the user to change the client name of the eTerm . The citrix server uses this name to uniquely identify resources associated with a particular device.

- **Server Location Tab**

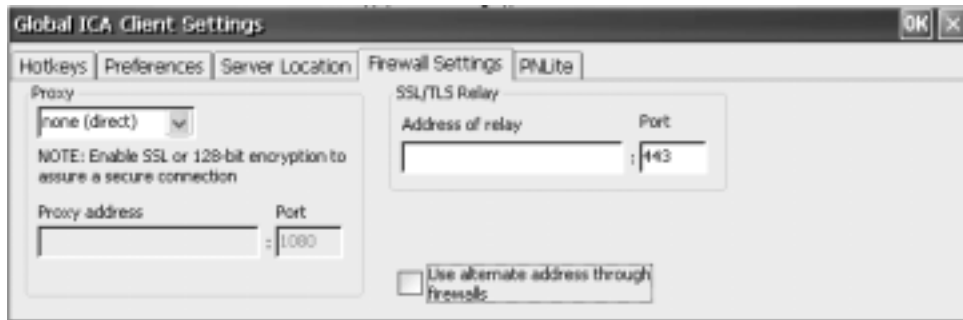


Server location (also called the ICA Browser or server browsing) provides a method for a user at a network-connected Citrix ICA Client computer to view a list of all Citrix servers and published applications. Each network protocol maintains a separate and independent master ICA browser. Set a specific server address for the Citrix server that functions as the master browser when your network configuration uses routers or gateways, or to eliminate broadcasts on your network.

- **Server Group** – Use the Server Group and Address List fields to create lists of specific servers that you want to designate as primary and backup servers for connecting to application sets. Backup server groups provide business recovery for your client in the event that you cannot contact any servers in your primary group. You can define up to three groups of Citrix servers to which you want to connect: a primary and two backups. Each group can contain from one to five servers. When you specify a server group for your client, the client attempts to contact all the servers within that group simultaneously (broadcasting) and the first server to respond is the one to which you connect. Use this field to designate whether the servers entered in the Address List field belong to your Primary, first backup (Backup 1), or second backup (Backup 2) group.
- **Address List** – Use the address list field to view and change the list of Citrix servers used in the selected server group. If you have not selected any servers, [Auto-Locate] is selected by default.

Click **Add** to add a Citrix server to your server group's address list.

- **Firewall Settings Tab**



- **Proxy** – Enter the Secure proxy server’s IP address or DNS name. If you are unsure of this information, contact your security administrator.
- **SSL/TSL Relay** – Enter the Address of relay and the Port number in the appropriate boxes.

- **PNLite Tab**

PNLite is an ICA connection mode that enables the CE client to connect to applications available on a Citrix server without having to configure connections for each published application.

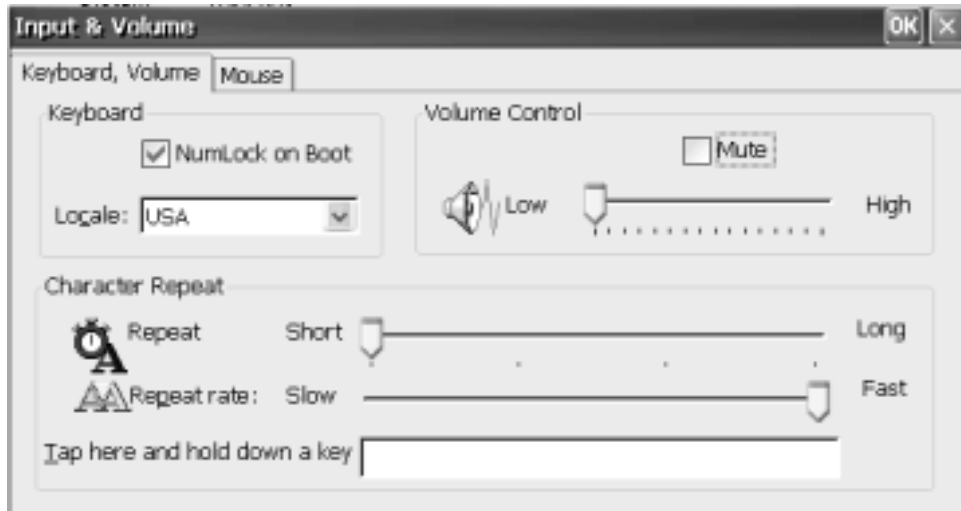


To enable PNLite, check the “Enable PNLite” box. Enter the address and port number of the NFuse server in the Address and port of NFuse server edit field. Enter your user name, password, and domain in the appropriate User Credentials edit fields. Check the Save Password box if you want the program to remember your password. Click **OK** to save your changes.

Input & Volume

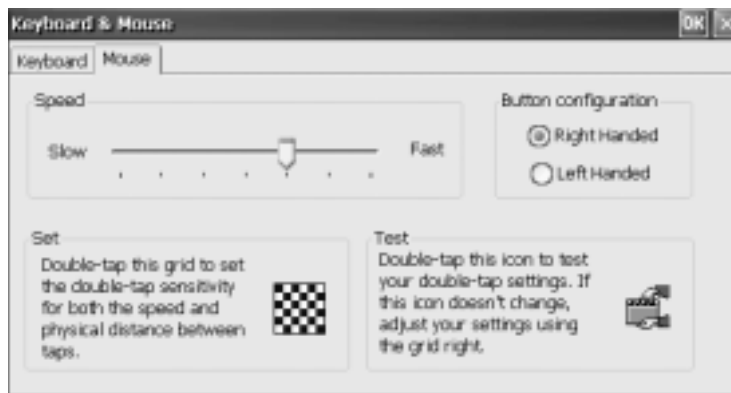
Select Input & Volume to make modifications to the mouse, keyboard and volume characteristics.

- **Keyboard, Volume Tab**



- **Keyboard** – Select **NumLock on boot** to have the numeric pad set for entering numbers after bootup. Use the **Locale** scroll list to select the desired language of the keyboard.
- **Character Repeat** – Use the **Repeat** slider to adjust the repeat delay of keyboard characters. Use the **Repeat rate** slider to adjust the repeat rate of keyboard characters.
- **Volume** – Use **Volume Control** to adjust or mute the audio volume of the unit.

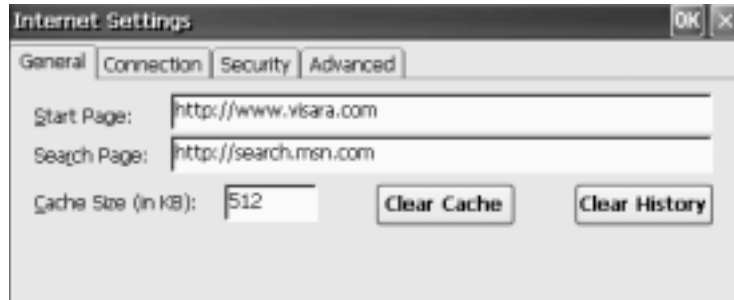
- **Mouse Tab**



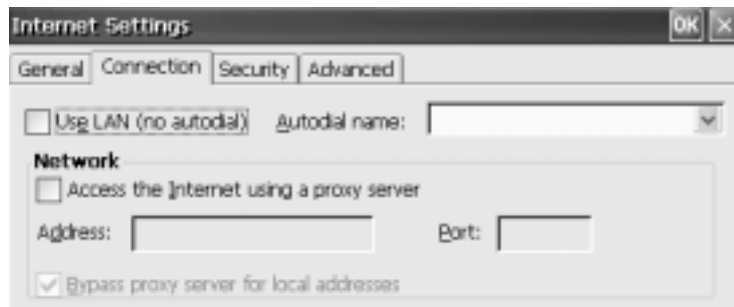
Use the **Speed** slider to adjust the mouse pointer speed. Select right or left-handed button orientation.

Internet Options

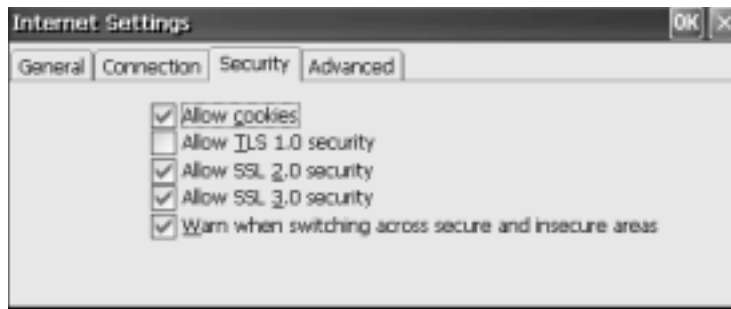
The following screens allow you to configure the local Internet Explorer Browser.



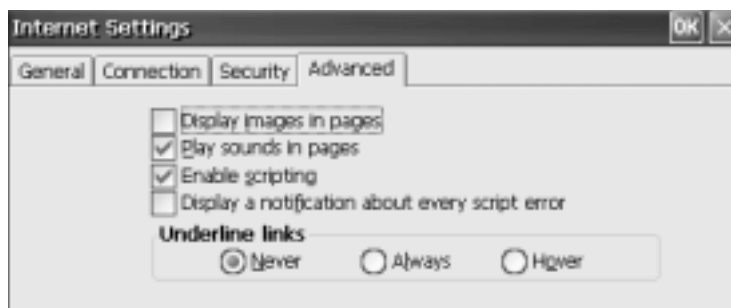
- **Start Page**
Enter the URL of the web site that is to be opened when the browser is started or the Home icon is clicked.
- **Search Page**
Enter the URL of the web site that is to be opened when the Search icon is clicked.



- **Use Lan**
Select if the terminal is connected to a LAN and does not require dialup to connect to the internet.
- **Network**
Enable if a Proxy server is required for accessing the Internet. Enter the address and port of the proxy server.



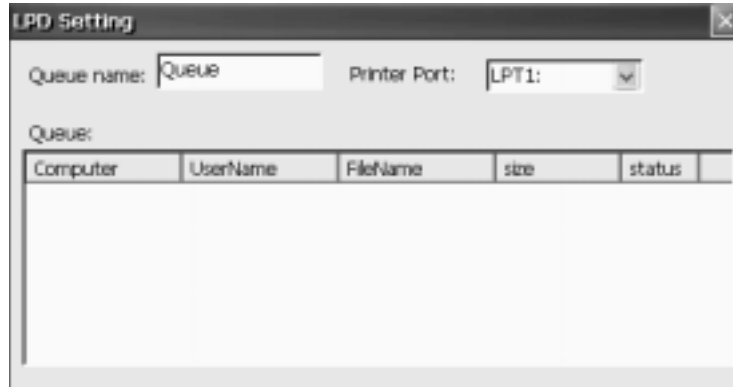
- **Allow Cookies**
If enabled, cookies may be placed on your computer and websites will be allowed to read cookies that they placed.
- **Allow TLS 1.0 security**
Specifies whether to send and receive secured information through Transport Layer Security 1.0 protocol.
- **Allow SSL 2.0 security**
Specifies whether to send and receive secured information through Secure Sockets Layer 2.0 protocol.
- **Allow SSL 3.0 security**
Specifies whether to send and receive secured information through Secure Sockets Layer 3.0 protocol.
- **Warn when switching across secure and insecure areas**
If enabled, a warning dialog will pop onto the screen when changing from a secure website area to a nonsecure area.



- **Display images in pages**
Enable the display of images on a web page
- **Play sounds in pages**
Allow sound, if included on a web page, to be played
- **Enable scripting**
Allow pages to run scripting (VB or Java scripts)

- **Display a notification about every script error**
If enabled, a warning dialog will pop onto the screen when a scripting error is encountered.
- **Underline links**
Enable the display of the underline for links on a web page

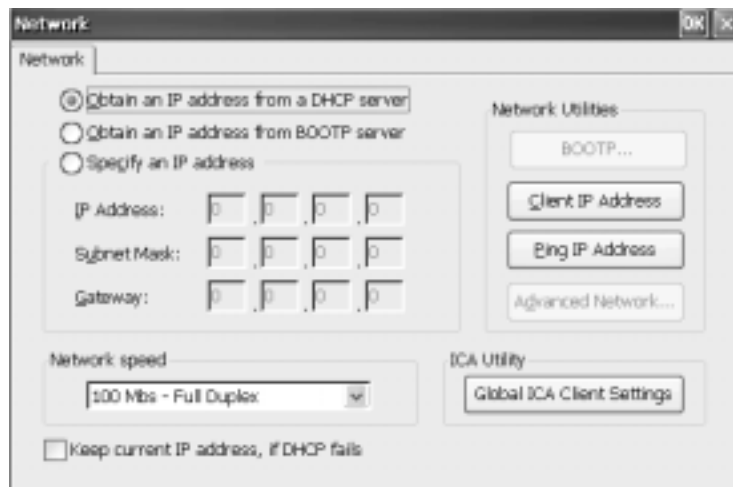
LPD



LPD (Line Printer Daemon) is a Unix style printer server protocol. This screen indicates the settings that will allow remote computers to send print jobs to the printer connected at the selected printer port. The queue name is the name of this LPD print queue.

Network

Every unit needs a valid IP address to identify itself to the network. This unit supports dynamic IP assignment through DHCP, or manual assignment of static IP address. If the terminal is not using DHCP, but you want it to, select **Obtain an IP address from a DHCP server**. Click **OK**.



Manually Assigning a Static IP Address

Select **Specify an IP address**. You will be required to enter the following information onto the screen. You may find it helpful to acquire this information from your system administrator.

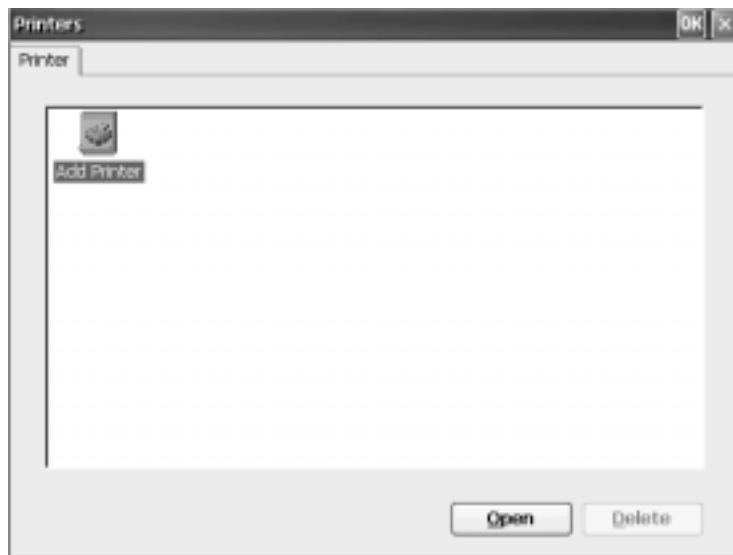
- **IP address:**
Required for identifying this unit to the network. The format will follow the standard addressing format.
- **Subnet Mask:**
Required for designating which network the IP Address is a part of.
- **Gateway:**
Optional address that identifies the machine through which a subnet communicates with another network
- Click **OK** to save your changes.

Network Utilities

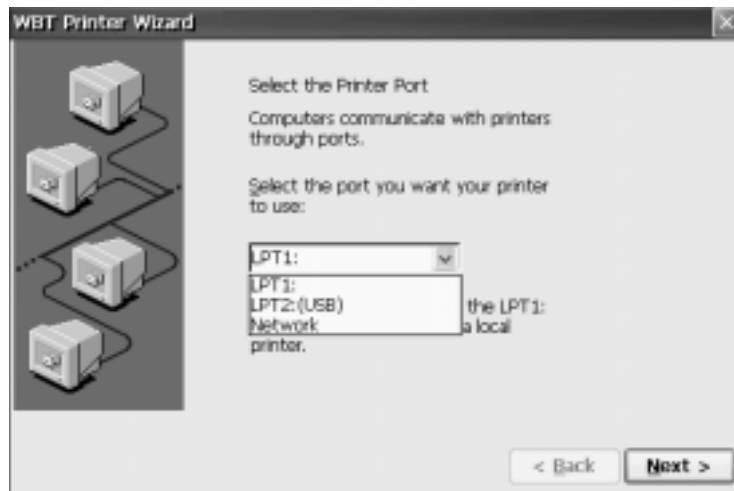
- Click **Client IP Address** to view the local client information
- Click **Ping IP Address** to check the status of and IP address, network name, or web site.

Printers

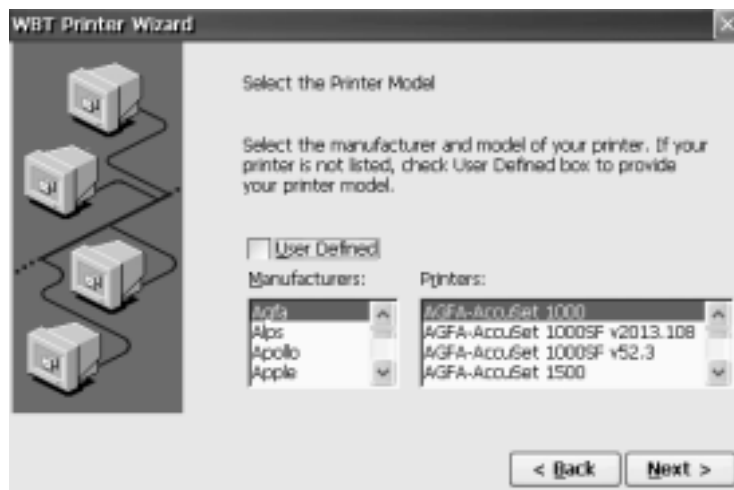
The following screens enable the setup of a remote printer.



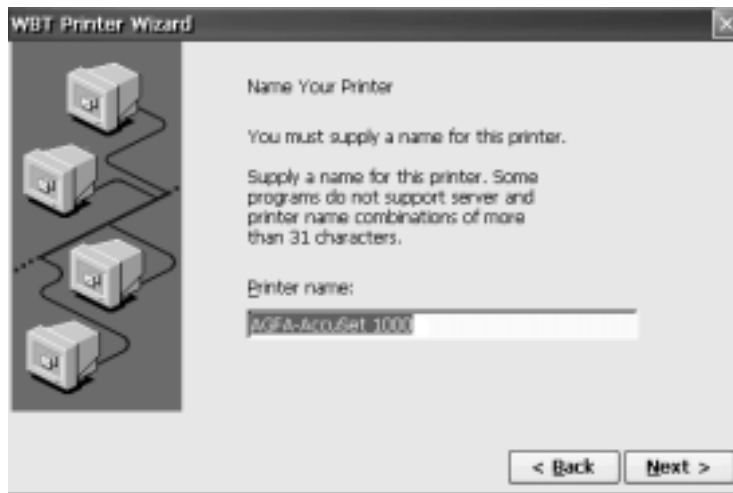
To add a new printer, select **Add Printer** and click **Open**.



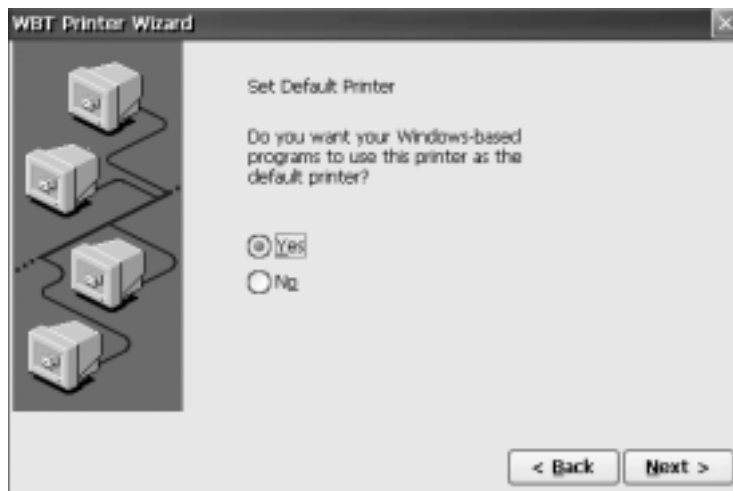
Select the printer port, click **Next**.



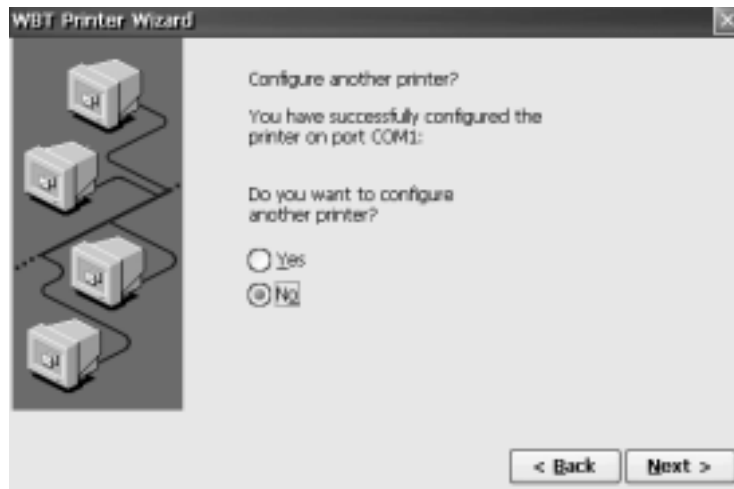
Select the printer's manufacturer and model. Click **Next** to continue.



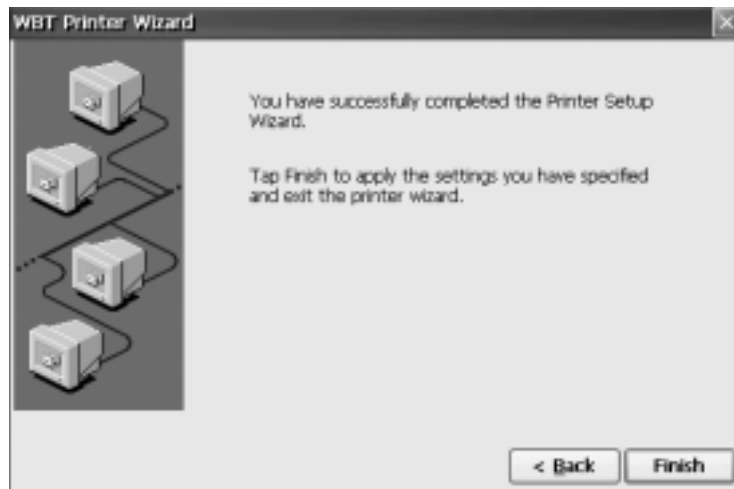
Enter a name to identify the printer. Click **Next** to continue.



To enable this printer to be the default printer, select **Yes** and click **Next** to continue.

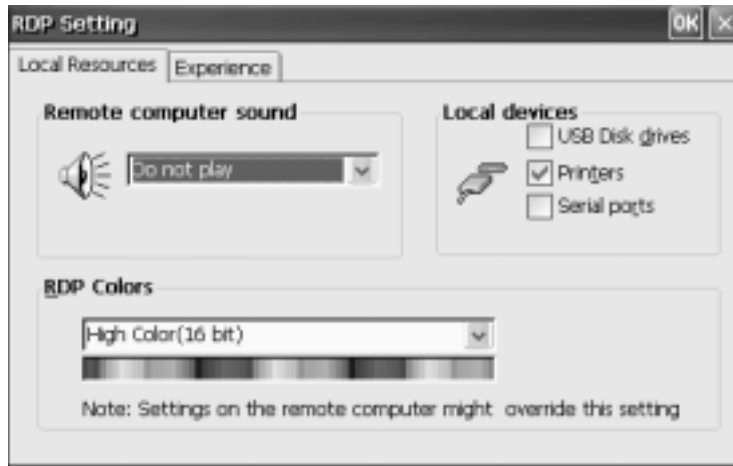


To configure another printer, select **Yes** and click **Next** to add another printer. If no further printers are to be configured, select **No** and click **Next** to continue.

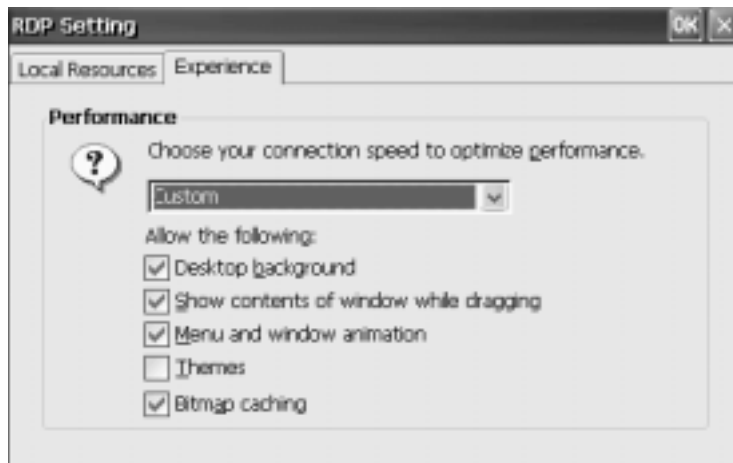


This is the final screen of the **Printer Wizard**. To review or change settings made on previous pages, click **Back**. To apply the changes, click **Finish**.

RDP Settings

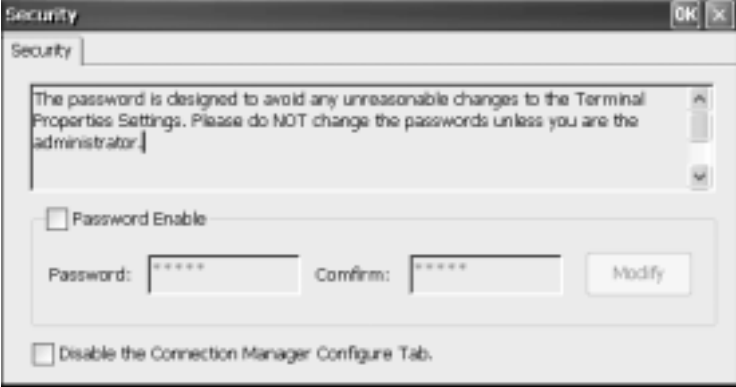


- **Remote computer sound**
You may choose whether to play the application sounds, from the remote desktop, on your terminal.
- **Local devices**
Devices that can be used by the application running on the server.
- **RDP Colors**
Choose the number of colors to be displayed when viewing the remote desktop.



- **Performance**
Choose the connection speed to the remote desktop.
Select to allow the options desired while viewing the remote desktop.

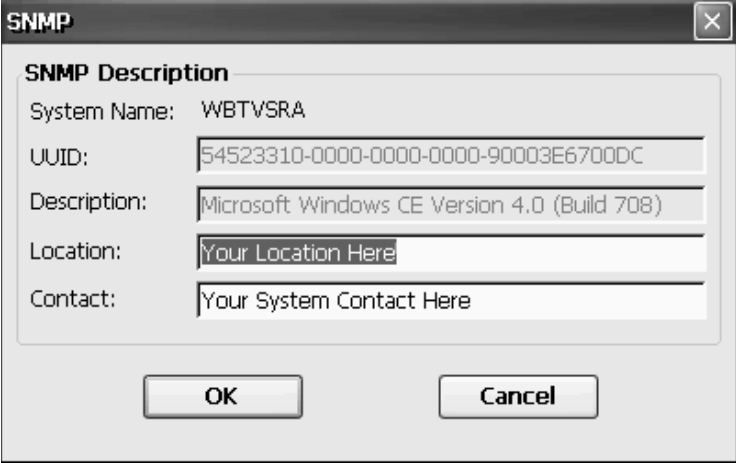
Security



The Security dialog box features a title bar with 'Security' and 'OK' buttons. Below the title bar is a tab labeled 'Security'. A text area contains the following message: "The password is designed to avoid any unreasonable changes to the Terminal Properties Settings. Please do NOT change the passwords unless you are the administrator." Below this message is a checkbox labeled "Password Enable". Underneath the checkbox are two text input fields: "Password:" and "Confirm:", both containing five asterisks. To the right of these fields is a "Modify" button. At the bottom of the dialog is another checkbox labeled "Disable the Connection Manager Configure Tab."

Selecting the Password Enable checkbox will require the user to enter a password before making any changes to terminal properties. Type the password, and then reenter to confirm.

SNMP



The SNMP Description dialog box has a title bar with 'SNMP' and a close button. Below the title bar is a section titled 'SNMP Description'. It contains five text input fields: 'System Name:' with the value 'WBTVSRA', 'UUID:' with the value '54523310-0000-0000-0000-90003E6700DC', 'Description:' with the value 'Microsoft Windows CE Version 4.0 (Build 708)', 'Location:' with the value 'Your Location Here', and 'Contact:' with the value 'Your System Contact Here'. At the bottom of the dialog are two buttons: 'OK' and 'Cancel'.

SNMP Description displays the unique identifier for the unit along with a description of the operating system. The **Location** and **Contact** may be edited.

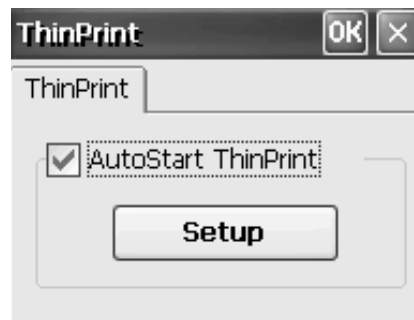
System



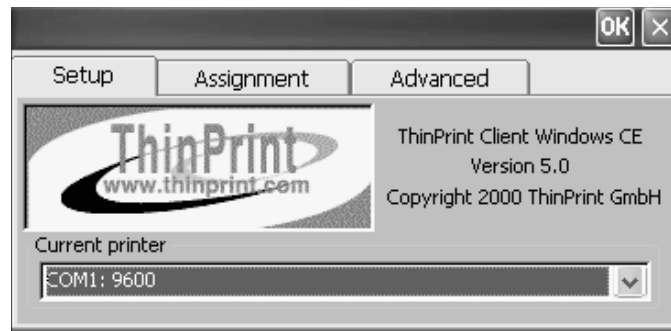
System Information displays the terminal information for the unit.

This unit is provided with factory default configuration values, which can be restored by selecting the checkbox. Click **OK** and restart the terminal to restore to default settings.

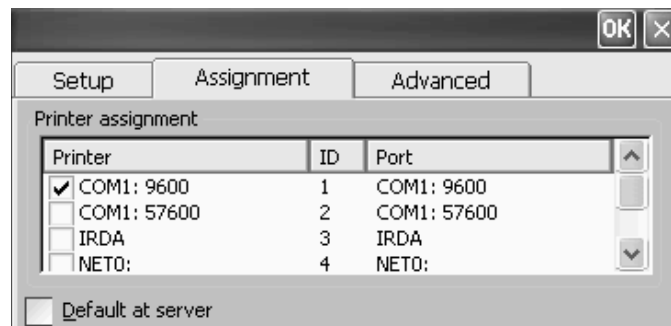
ThinPrint



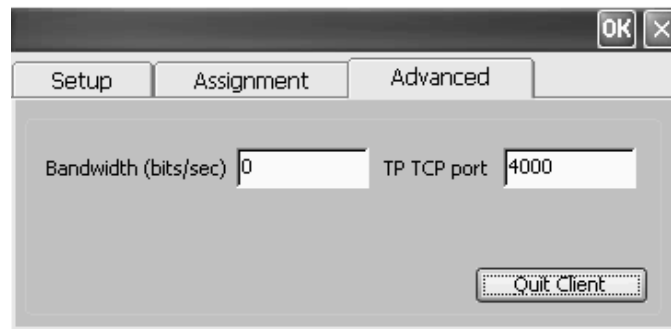
To enable autostart, select **AutoStart ThinPrint**. Click **Setup** to assign and configure printers.



Select the Current printer from the scroll box.

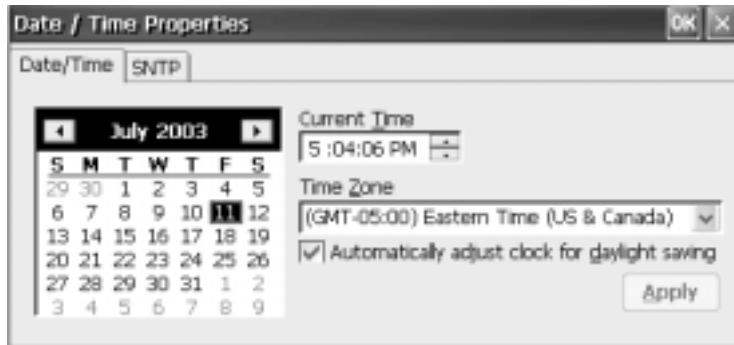


Assignment lists the available printers, their ID, and port information. If **Default at server** is checked, the current printer will be the default printer for the session.



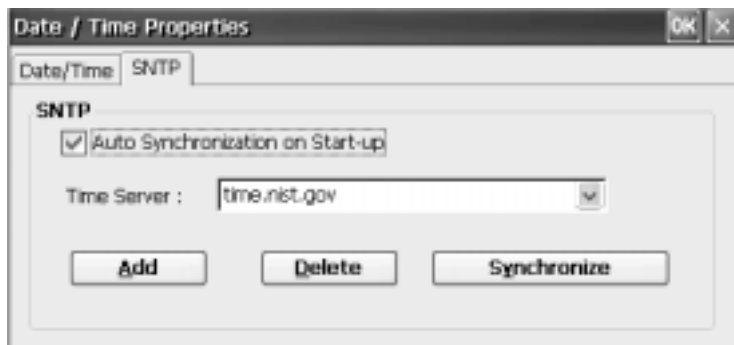
Enter the bandwidth value and the port number where the client should receive incoming connections.

Date/Time



Select the desired time zone based on your location. You may select the checkbox to automatically adjust the time for daylight savings.

SNTP



SNTP (Simple Network Time Protocol) is utilized to synchronize computer clocks by accessing a time server on the internet. Synchronization may be accomplished manually by clicking the **Synchronize** button, or automatically by selecting **Auto Synchronization On Startup**.

A

About the Product 1-2
Accessing the Control Panel 4-1
Additional Connection Capabilities 3-17

C

Citrix ICA Client 3-6 – 3-14
 Completing the Connection 3-9, 3-13
 Creating a Dial-In Connection 3-10
 Creating a Network Connection 3-6
 Deleting a Connection 3-10, 3-13
 Modifying a Connection 3-10, 3-14
Configuring Connection Manager 3-1
Configuring Host Connections 3-15 – 3-17
 Connection Name 3-15
 Connection Type 3-15
 Host Name / Address 3-15
 New Connection 3-15
 Terminal Type 3-16
 Timeout 3-17
Configuring Remote Desktop Client (RDP)
 Automatic Logon 3-3
 Deleting a Connection 3-5
 Modifying a Connection 3-5
 Selecting Windows NT Desktop or
 Application to Run 3-4
 Specify Connection Name and Server 3-2
Configuring the Unit 2-1
Configuring the Unit via Control Panel 4-1
Connecting the Terminal 1-5
Connection Types 3-14
Connector Introduction 1-5
Control Panel
 Display 4-2
 FTPUpdate 4-2
 ICA Setting 4-3
 Internet Options 4-7
 LPD 4-9
 Manually Assigning a Static IP Address 4-10
 Network 4-9
 Network Utilities 4-10
 RDP Setting 4-14

Security 4-15
SNMP 4-15
System 4-16
ThinPrint 4-16

D

Date/Time 4-18
Display Parameters, TN3270 3-19
Display Parameters, TN3270E 3-19
Display Parameters, TN5250E 3-17

E

eTerm Setup Wizard 2-1 – 2-10
 Additional Printer Setup 2-9
 Choose Display Resolution 2-5
 Configure Web Access 2-6
 Enable/Disable Dynamic Assignment of IP
 Address 2-2
 Enable/Disable Name Resolution Services 2-4
 Finishing the Setup Wizard 2-10
 License Agreement Screen 2-1
 Local Printer Setup 2-7
 Printer Default 2-9
 Printer Model Setup 2-8
 Printer Name 2-8
 Printer Port Setup 2-7
 Restarting after Setup Wizard 2-10
 Specify a Static IP Address 2-3
 Welcome Screen 2-1

F

Firewall Settings 4-5

I

Input & Volume 4-6
Installation 1-1 – 1-8

M

Microsoft Remote Desktop Client Connection 3-2
Modifying a Connection 3-5, 3-10

P

Package Overview 1-2 – 1-3
Powering On the Terminal 1-5
Precautions 1-1
Printer Parameters, TN3270E 3-20
Printer Parameters, TN5250E 3-18
Printers 4-10
Product Overview 1-4 – 1-5

R

Restarting after Setup Wizard 2-10

S

SNTP 4-18
Specifications -
 eTerm 300 1-6
 eTerm 360 1-7
 eTerm 760 1-8

T

Terminal Connection 3-1 – 3-20
Terminal Properties 4-1 – 4-18
Troubleshooting 1-6

U

Usage Notice 1-1

V

Visara HostConnect Client Connection 3-14