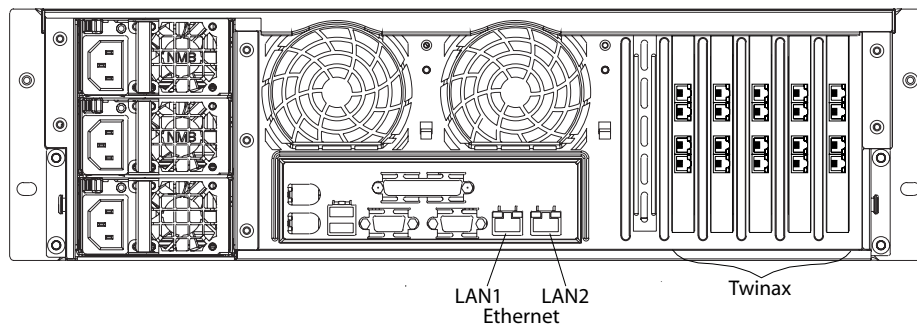


## Initial setup of the ICON:

1. Cable the unit (power, Ethernet, Twinax) (see **Cabling the Unit** below).
2. Edit the TWINCON.INI file on the floppy (see **Setting the Initial IP Address** below).
3. Power up the unit with the floppy in the drive.
4. Using any web browser, connect to the ICON to complete the setup. *The Management Password is case sensitive, and is set at the factory to **admin**.*

## Cabling the Unit



### Ethernet

- The RJ45 connectors at the bottom of the chassis are for Ethernet.
- The RJ45 connector on the left (as facing the back of the unit) is LAN1.
- Either LAN1 or LAN2 can be used to access all functions of the ICON.

### Twinax

- The ICON requires a special Twinax adapter cable (Visara part number 971908-009), and ships with one for each port.

## Setting the Initial IP Addresses

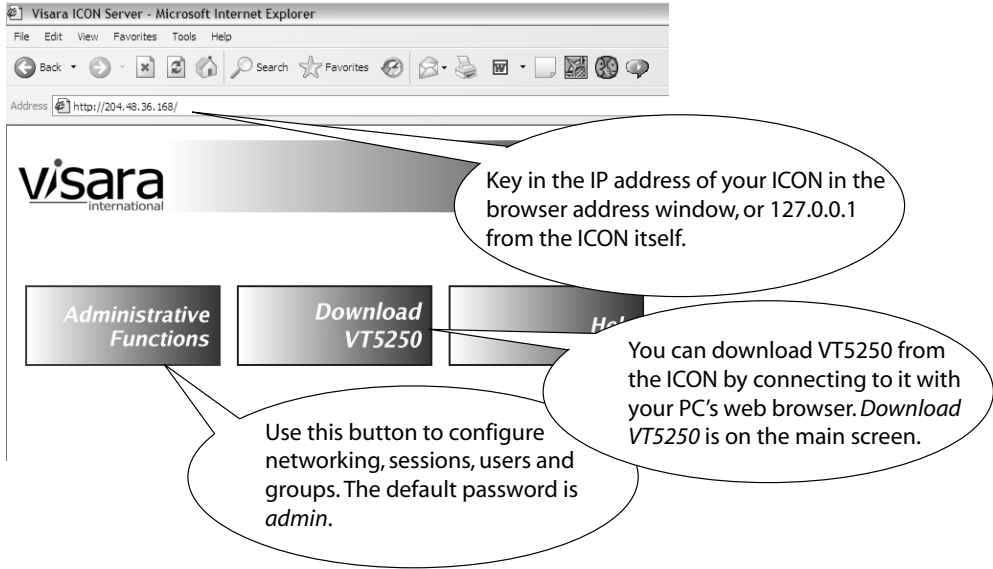
On the floppy disk included with the unit is a file called TWINCON.INI, which includes a section that looks like this:

```
[Network]
IP=204.48.36.155
NetMask=255.255.255.0
DefaultGateway=204.48.36.254
```

1. Using a plain-text editor (such as Windows' Wordpad), change the IP addresses to the desired values. If the original floppy cannot be located, just create TWINCON.INI on a floppy with the entries shown above.  
*Note: no whitespace (spaces or tabs) is allowed in these entries.*
2. Put the floppy disk back into the ICON, and turn it on. The values in the file on the floppy will be copied to the permanent copy on the hard disk, and will take affect immediately. The floppy is not required for future reboots.

Getting Started

The Factory Default configuration that ships with your unit has all the twinax sessions set to allow connection with no password requirements. Once you have cabled the unit and set the IP address you can connect to it with the VT5250 Session Manager, and use the twinax connections immediately. If you have a monitor, keyboard, and mouse connected to the ICON, you will see the VT5250 Session Manager ready to connect to any of the twinax sessions. If you do not, you will need to download and run VT5250 from a Windows PC or another ICON.



Configuring Users, Groups and Sessions

