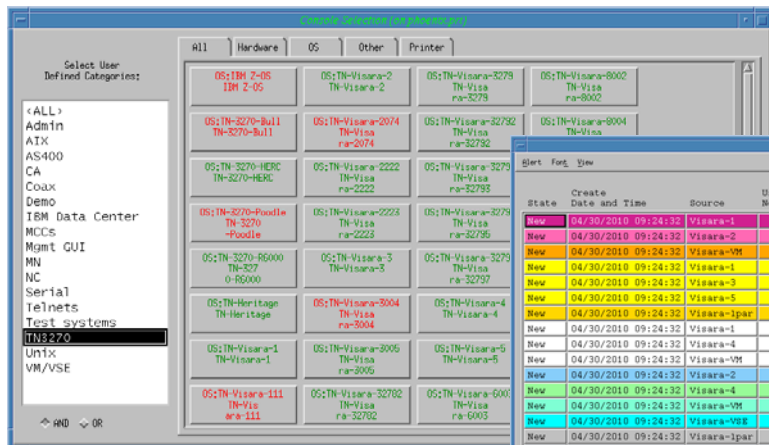
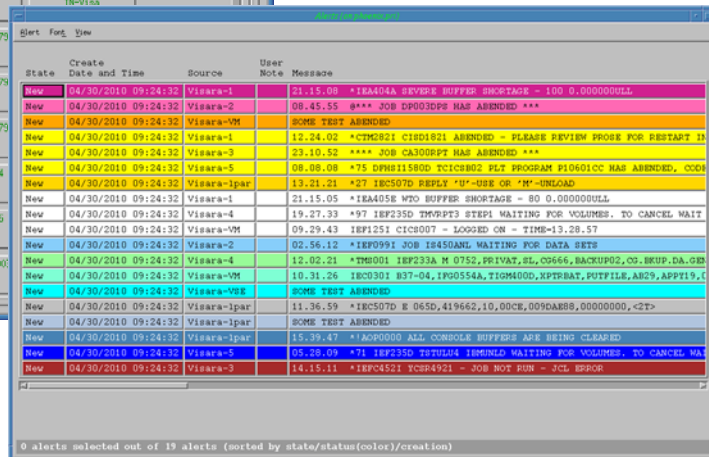




MCC console Management



Console Selection Window



Alert Window

Visara's Master Console Center (MCC) appliance is a flexible and cost-effective solution for data center console control and automation. Using its ability to interface and manage a variety of console types, the MCC is truly a "master console" for system operators.

KEY FEATURES

- Manage up to 600 consoles from any point anywhere in the world
- Single click access to any authorized console via Console Selection window
- Control:
 - Mainframe (z/OS, OS/390,VM)
 - Midrange (i-Series, AS/400)
 - System Servers (such as Sun,HP and Linux)
 - Other Devices - Any RS-232 serial controllable device
- Display and interact with all console panels:
 - With directly attached monitor and keyboard
 - With a remotely attached PC and X windows client
 - With a remotely attached PC and any browser
- Share and manage console consoles between multiple users
- Console icons change color when tracking connectivity, server power off, etc.
- Manage customized alerts via Alert Window interface
- Update alerts for problem tracking
- View console history through the console history log
- Complete Audit Trail helps provide Sarbanes-Oxley (SOX) compliance
- Completely outboard solution
 - no changes to target hosts
- Easy growth from controlling one to hundreds of consoles

System Access

Most IT environments contain multiple processors and they are very often a mixture of mainframes, midrange, and system servers. The multiplicity of processors creates a diverse mixture of operator skill sets and consoles. The MCC can seamlessly integrate the consoles into single or multiple display panels, which can be viewed and shared by multiple operators. Additionally, each console and each operator can have specified levels of access as defined by IT management. This flexibility in controlling levels of access supports simplified management of operator access, both locally and remotely attached.

Security

The MCC's "Triple A" (Authentication, Authorization and Auditing) capabilities ensure security access compliance. Only authorized personnel are granted access to critical computer operations and all their activities are time-stamped and logged for retrieval and audit.

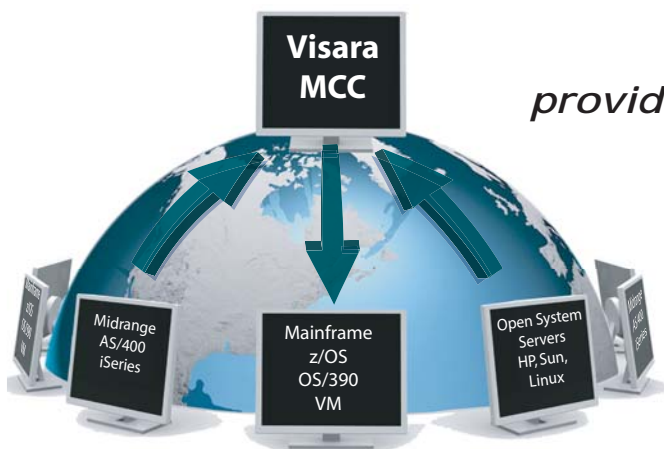
Automation

The MCC provides full programmable script-based automation which greatly increases the efficiency of console operations. Most day-to-day repetitive console operations can be easily automated, freeing valuable operations personnel to more effectively deal with activities requiring human intervention. Automation scripts support such functions as filtering unwanted messages, automatically replying to messages with pre-programmed responses, and alerting operators, system programmers and senior staff of messages requiring immediate attention.

MVS Agent

MVS environments can experience periods of very high console message traffic, sometimes easily reaching 100's of messages per second. In environments with many MVS LPARs, console messages during high activity or critical situations can reach 1000's of console messages per second. These high message rates can saturate network bandwidth and overwhelm console automation systems. In these situations, it is imperative to off-load excessive filtering and message processing from the network and automation system.

The MCC includes a host resident MVS agent, MCCSTARS, which is designed to alleviate this problem. MCCSTARS is configurable to pass only messages identified as important by the issuing host application to the MCC appliance. During these high traffic situations, MCCSTARS filters out the unimportant message that in turn limits unnecessary network traffic to and from the MCC. The MCCSTARS agent uses industry standard SNMP for its network communications to the MCC and IBM approved API's for its MVS interface.



*The MCC
provides a single console control point for
Mainframes & Midrange Systems
Client-Server Systems
SNA/VTAM
IP Networks
from anywhere in the world...*